



CAYMON
professional stands and racks



INTRODUCTION

CAYMON's designers are convinced that one of the most important indicators to identify a company, is its customers: the people that once bought our products for the first time and experienced them in everyday life, getting to know them better, and eventually keep buying them.

At this moment, CAYMON offers a vast range of installation products, ranging from racks, microphone, music and speaker stands to brackets, adaptors and accessories.

This assortment for its part reflects on their variety of customers and thus applications, which vary from churches to concert halls, from nightclubs to cultural centres, from individual musicians to symphonic orchestras.

An extensive product range requires a clear vision on past, present and future.

That's why, many years ago, CAYMON's foundation was based on four solid principles, which have been our company standards ever since: the aim to look ahead and anticipate worldwide tendencies, the aspiration to combine functionality with contemporary design, the decision to settle for no less than the highest quality and the continuous keeping in mind of our existing, new and potential customers.

These standards remind us where we're coming from and what we're aiming for, in an ever-changing, ever-innovating market.

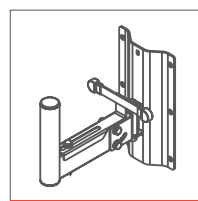
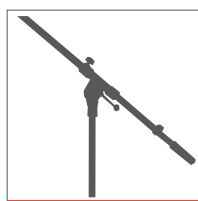
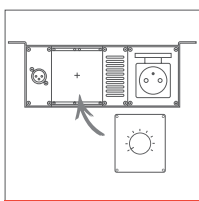
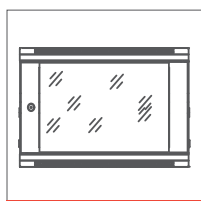


TABLE OF CONTENT

19" RACKS & ACCESSORIES

SPR SERIES	6
GPR SERIES	8
OPR SERIES	10
DPR SERIES	11
TPR SERIES	12
WPR SERIES	13
HPR SERIES	14
EPR SERIES	15
PR SERIES	16
NPR SERIES	17
RACK ACCESSORIES	18
RACK PLATES	21
BLIND PLATES	22
CABLE ORGANIZERS	23
SCREWS & CAGE NUTS	23
POWER DISTRIBUTION	24
INTELLIGENT POWER SEQUENCER	26
RACK SHELVES	27
DRAWERS	28

CASY - MODULAR SOLUTIONS

CHASSIS & STRAIN RELIEF	32
STAGE BOX	34
TABLE & WALL MOUNT	35
ELEMENTS	40
CONNECTION MODULES	42

STANDS

MICROPHONE STANDS & ACCESSORIES	46
SPEAKER STANDS	51

ACCESSORIES

RIGGINGS	54
BRACKETS	55



CAYMON



19" RACKS & ACCESSORIES

SPR SERIES

Optimal protection in fixed installations is guaranteed with the SPR series 19" racks which are compliant to ANSI/EIA RS-310D, DIN41491 and IEC60297 standards and come available in a wide range of heights and depths. They are constructed using a cold rolled steel frame with a thickness of 2 mm and 1,2 mm plates finished in a black (RAL9004) powder coating with fine structure. They come standard with a reversible tempered glass front and steel rear door, both fitted with easy-swing locks. Other features for this product range are removable sides, in depth adjustable 19" profiles, included leveling feet and wheels, ...

600mm depth



SPR612
19" rack
12 units
600 mm depth
600 mm width



SPR618
19" rack
18 units
600 mm depth
600 mm width



SPR627
19" rack
27 units
600 mm depth
600 mm width



SPR632
19" rack
32 units
600 mm depth
600 mm width



SPR642
19" rack
42 units
600 mm depth
600 mm width

800 - 1000mm depth



SPR818(GG)
19" rack
18 units
800 mm depth
600 mm width

GG: Grill front and rear door



SPR832(GG)
19" rack
32 units
800 mm depth
600 mm width

GG: Grill front and rear door



SPR842(GG)
19" rack
42 units
800 mm depth
600 mm width

GG: Grill front and rear door



SPR8842(GG)
19" rack
42 units
800 mm depth
800 mm width

GG: Grill front and rear door



SPR1042
19" rack
42 units
1000 mm depth
600 mm width

Specifications

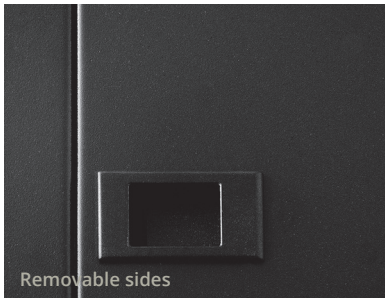
ARTICLE	FINISH	DIMENSIONS (H x W x D)	USABLE DEPTH	HEIGHT WITH WHEELS	WEIGHT
SPR612	Glass door w/ keylock	636 x 600 x 600 mm	540 mm	722 mm	39 kg
SPR618	Glass door w/ keylock	918 x 600 x 600 mm	540 mm	988 mm	49 kg
SPR818	Glass door w/ keylock	918 x 600 x 800 mm	740 mm	988 mm	62 kg
SPR18GG	Grill door front and rear	918 x 600 x 800 mm	740 mm	988 mm	59 kg
SPR627	Glass door w/ keylock	1318 x 600 x 600 mm	540 mm	1388 mm	64 kg
SPR632	Glass door w/ keylock	1540 x 600 x 600 mm	540 mm	1610 mm	74 kg
SPR832	Glass door w/ keylock	1540 x 600 x 800 mm	740 mm	1610 mm	84 kg
SPR832GG	Grill door front and rear	1540 x 600 x 800 mm	740 mm	1610 mm	76 kg
SPR642	Glass door w/ keylock	1985 x 600 x 600 mm	540 mm	2055 mm	88 kg
SPR842	Glass door w/ keylock	1985 x 600 x 800 mm	740 mm	2055 mm	100 kg
SPR842GG	Grill door front and rear	1985 x 600 x 800 mm	740 mm	2055 mm	88 kg
SPR8842	Glass door w/ keylock	1985 x 800 x 800 mm	740 mm	2055 mm	120 kg
SPR8842GG	Grill door front and rear	1985 x 800 x 800 mm	740 mm	2055 mm	106 kg
SPR1042	Glass door w/ keylock	1985 x 600 x 1000 mm	940 mm	2055 mm	115 kg

- Reversible door position
- Keylock on both doors and side panels
- In depth adjustable 19" profiles (front & rear)
- Cable entry on top & bottom
- Ventilation grid on top
- 50 mm wheels + leveling feet included
- Punched square holes for use with snap-in cage nuts
- Static load up to 800 kg
- Pre-assembled

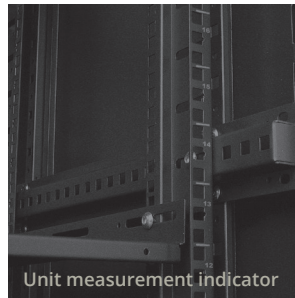
Compatible cage nuts:



KM600 : M6 Cage nut / 0.5 ~ 2.0 mm plate thickness / zinc plated (more info p. 23)



Removable sides



Unit measurement indicator



Grill door option

SPRxxGL



SPR OPTIONAL GRILL DOORS

SPR18GL Grill door for SPR618/818

SPR27GL Grill door for SPR627

SPR32GL Grill door for SPR632/832

SPR42GL Grill door for SPR642/842/1042

- Mesh perforation with hexagonal pattern
- Swing handle with cylinder lock
- Installable on front and rear

GPR SERIES

Flush installation of 19" equipment is made possible using the GPR series racks which are compliant to ANSI/EIA RS-310D, DIN41491 and IEC60297 standards. The slide-out construction allows rack integration into walls or furniture, while keeping the rear side of the equipment accessible for maintenance and servicing. The extending equipment bay rotates over a 90° angle in either direction, while a rear cable support allows effective cable management. They come available in various heights ranging from 12 up to 24 rack space.



GPR412
19" slide out rack
12 units
425 mm depth

GPR418
19" slide out rack
18 units
425 mm depth

GPR424
19" slide out rack
24 units
425 mm depth

Compatible cage nuts:  **KM600A** : M6 Cage nut / 2.0 ~ 3.5 mm plate thickness / zinc plated (more info p. 23)

Specifications

ARTICLE	DIMENSIONS (H x W x D)	USABLE DEPTH	MAX LOAD
GPR412	611 x 503 x 489 mm	425 mm	60 kg
GPR418	878 x 503 x 489 mm	425 mm	60 kg
GPR424	1145 x 503 x 489 mm	425 mm	60 kg

- In-wall / furniture integration for 19" equipment
- HexaSlide™ rail system
- Extending equipment bay
- Locks in extended position for simplified installation
- Rear support for cable management
- Max load up to 60 Kg
- Assembly in a record breaking time by a single person (+/- 15 min.)
- 3 mm thick cage nut profiles





Locks in extended position

OPR SERIES

The OPR series are solid constructed open-frame racks for 19" equipment compliant to ANSI/EIA RS-310D, DIN41491 and IEC60297 standards which are suitable for wall mounted or floor standing installation. The rugged construction made of 2 mm thick steel allows pre-loading of the equipment before transportation to the installation site. Finishing is done in a black (RAL9004) powder coating with fine structure while punched equipment mounting profiles on front and both sides offer a multifunctional use of the cabinet. Delivered in a flat-down package, the simple structure allows assembly by a single person in a record-breaking time. Available in various heights from 3 up to 18 rack spaces.



OPR303A
19" in depth adjustable open-frame rack
3 units
300 ~ 450 mm depth

OPR306A
19" in depth adjustable open-frame rack
6 units
300 ~ 450 mm depth

OPR309A
19" in depth adjustable open-frame rack
9 units
300 ~ 450 mm depth

OPR312A
19" in depth adjustable open-frame rack
12 units
300 ~ 450 mm depth

OPR318A
19" in depth adjustable open-frame rack
18 units
300 ~ 450 mm depth



OPR506A
19" in depth adjustable open-frame rack
6 units
500 ~ 700 mm depth

OPR509A
19" in depth adjustable open-frame rack
9 units
500 ~ 700 mm depth

OPR512A
19" in depth adjustable open-frame rack
12 units
500 ~ 700 mm depth



OPR300C
Ceiling mounting bracket for OP3xxA and OPR5xxA series
Optional accessory

Compatible cage nuts:



KM600: M6 Cage nut / 0.5 ~ 2.0 mm plate thickness / zinc plated (more info p. 23)

Specifications

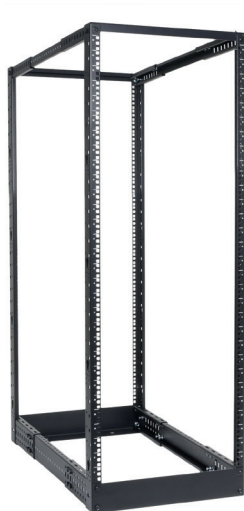
ARTICLE	DIMENSIONS (H x W x D)	USABLE DEPTH	MAX LOAD STANDING	MAX LOAD HANGING
OPR303A	158 x 520 x 300 - 450 mm	300 - 450 mm	100 kg	25 kg
OPR306A	291 x 520 x 300 - 450 mm	300 - 450 mm	100 kg	25 kg
OPR506A	291 x 520 x 500 - 700 mm	500 - 700 mm	100 kg	25 kg
OPR309A	425 x 520 x 300 - 450 mm	300 - 450 mm	100 kg	50 kg
OPR509A	425 x 520 x 500 - 700 mm	500 - 700 mm	100 kg	25 kg
OPR312A	558 x 520 x 300 - 450 mm	300 - 450 mm	100 kg	50 kg
OPR512A	558 x 520 x 500 - 700 mm	500 - 700 mm	100 kg	50 kg
OPR318A	825 x 520 x 300 - 450 mm	300 - 450 mm	100 kg	50 kg



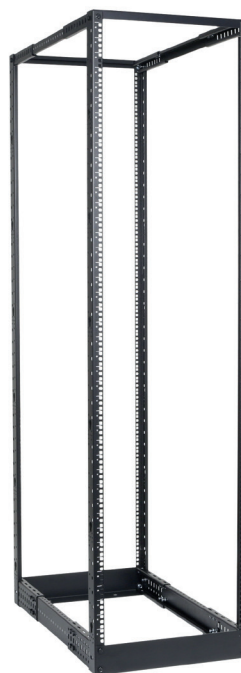
- In depth adjustable
- Solid constructed (2 mm steel)
- Flat-down package
- Floor standing & wall mounting use
- Simple structure
- Assembly in a record breaking time by a single person (+/- 10 min)
- Stand alone & in-furniture integration
- Unrestricted air flow due to open frame design

DPR SERIES

A sturdy and low-cost solution for installation of a large number of 19" equipment is offered by the DPR 4-post open frame rack series which are compliant to ANSI/EIA RS-310D, DIN41491 and IEC60297 standards. The open frame construction is made of solid steel and finished in a black (RAL9004) powder coating with fine structure. Adjustable vertical supports allow in depth adjustment within a range of 55 to 101.5 cm. Delivery in a flat-down package allows easy transportation of the rack to any installation location. Available in heights of 32 and 42 rack space.



DPR932
4-post 19" open-frame rack
32 units
550 - 1015 mm depth



DPR942
4-post 19" open -rame rack
42 units
550 - 1015 mm depth

Compatible cage nuts:  **KM600** : M6 Cage nut / 0.5 ~ 2.0 mm plate thickness / zinc plated (more info p.23)

Specifications

ARTICLE	DIMENSIONS (H x W x D)	USABLE DEPTH	MAX LOAD
DPR932	1562 x 600 x 558 ~ 1023 mm	550 ~ 1015 mm	450 kg
DPR942	2006 x 600 x 558 ~ 1023 mm	550 ~ 1015 mm	450 kg

- Sturdy 2 mm thick steel & low cost solution
- In depth adjustment (55 ~ 101.5 cm)
- Flat-down package
- Unrestricted air flow due to open frame design
- Assembly in a record breaking time by a single person (+/- 15 min.)



TPR SERIES

The TPR series are desktop racks with adjustable angle for 19" equipment compliant to ANSI/EIA RS-310D, DIN41491 and IEC60297 standards which are suitable for desktop use in applications such as recording studios, test laboratories, ... and many more. The open frame structure is solid constructed using 2 mm thick steel finished in a black (RAL9004) powder coating with fine structure. Punched equipment mounting profiles on the front and side guarantee a flexible use. Delivered in a flat-down package, the simple structure allows efficient shipment and assembly in a record-breaking time. Available in 6 and 9 rack space height.



TPR306A
Desktop open frame rack
6 units - Adjustable angle 0° ~ 15°



TPR309A
Desktop open frame rack
9 units - Adjustable angle 0° ~ 15°

Specifications

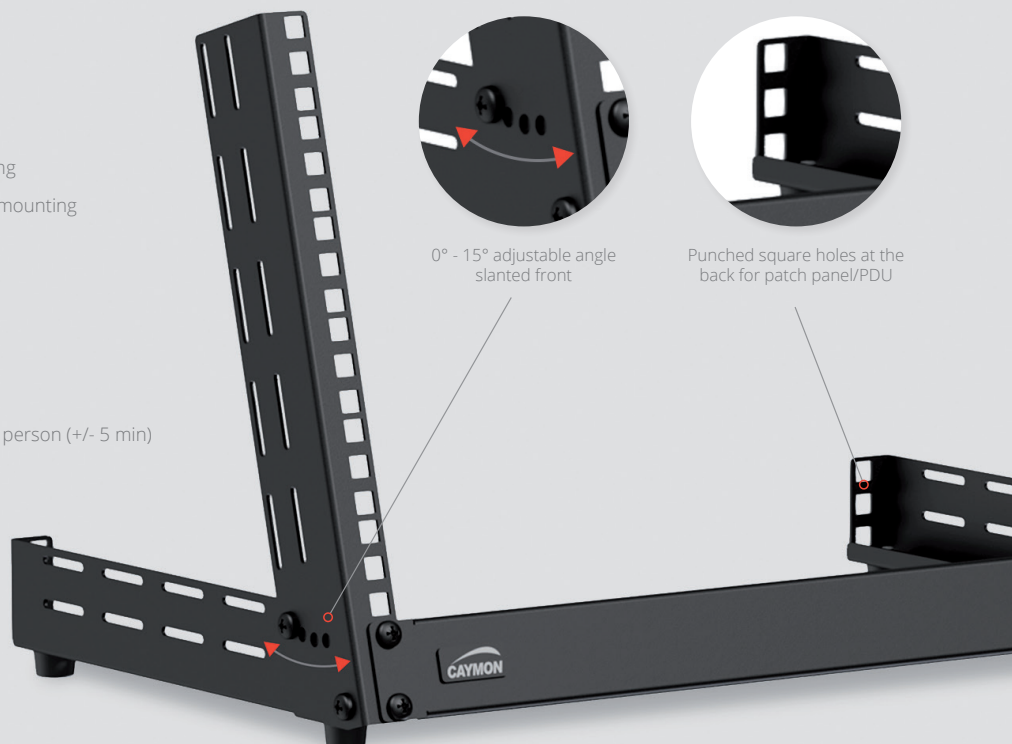
ARTICLE	DIMENSIONS (H x W x D)	MAX LOAD
TPR306A	318 x 509 x 301 mm	30 kg
TPR309A	446 x 509 x 301 mm	30 kg

Compatible cage nuts:



KM600 : M6 Cage nut / 0.5 ~ 2.0 mm plate thickness / zinc plated (more info p. 23)

- 0° ~ 15° adjustable angle
- Slightly slanted front for optimal equipment viewing
- Perforated sides for cable guiding or accessories mounting
- 1 unit backside mounting possibility
- Solid constructed (2.0 mm steel)
- Flat down package
- Desktop standing use
- Simple structure
- Easy assembly in record breaking time by a single person (+/- 5 min)



0° - 15° adjustable angle slanted front



Punched square holes at the back for patch panel/PDU

WPR SERIES

Maximum installation flexibility is guaranteed with the WPRxxR series wall mountable 19" racks which are compliant to ANSI/EIA RS-310D, DIN41491 and IEC60297 standards. Their flexible structure allows installation at any location while their different heights and depths provide a solution for a wide variation of applications. They are constructed using a cold rolled steel frame with a thickness of 1,5 mm and 1,2 mm plates, finished in a black (RAL9004) or white (RAL9003) powder coating. The front is finished with a reversible tempered glass front door with a keylock with butterfly handle. Other features for this product range are removable and lockable side and rear panels, in depth adjustable 19" profiles, ventilation grid in top panel and so on.



WPR406R
19" wall rack
6 units
450 mm depth


WPR606R
19" wall rack
6 units
600 mm depth

WPR409R
19" wall rack
9 units
450 mm depth

WPR609R
19" wall rack
9 units
600 mm depth

WPR412R
19" wall rack
12 units
450 mm depth

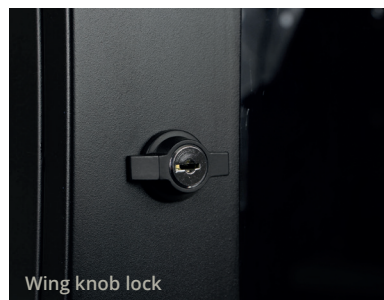
WPR612R
19" wall rack
12 units
600 mm depth

Compatible cage nuts:  **KM600** : M6 Cage nut / 0.5 ~ 2.0 mm plate thickness / zinc plated (more info p. 23)

Specifications

ARTICLE	DIMENSIONS (H x W x D)	USABLE DEPTH	MAX LOAD	WEIGHT
WPR406R	368 x 600 x 450 mm	410 mm	60 kg	18,5 kg
WPR606R	368 x 600 x 600 mm	560 mm	60 kg	22 kg
WPR409R	501 x 600 x 450 mm	410 mm	60 kg	22,3 kg
WPR609R	501 x 600 x 600 mm	560 mm	60 kg	27 kg
WPR412R	638 x 600 x 450 mm	410 mm	60 kg	23,6 kg
WPR612R	638 x 600 x 600 mm	560 mm	60 kg	30 kg

- Tempered glass door with keylock
- Keylock with butterfly handle
- Side panels with security key
- Removable rear and side panel
- Front in depth adjustable 19" profiles
- Cable entry on top, back & bottom (closable)
- Ventilation grid on top
- Punched square holes for use with snap-in cage nuts
- Static load up to 60 Kg



WPR10CL



ROTARY CODE LOCK FOR WPR/HPR SERIES CABINETS

3 digit combination lock
Can replace any 3/4" diameter rotary tongue lock
Password can be reset without any special tools
Easy to install

HPR SERIES

Professional 19" double section wall rack cabinet which complies to ANSI/EIA RS-310D, DIN41491 and IEC60297 standards. It ensures maximum installation, connectivity and maintenance ease. The solid construction made of a 1,5 mm thick steel frame and 1,2 mm thick plates is finished with a black (RAL9004) fine structured powder coating. It provides a stable and secure installation while the double section structure allows easy access to the rear side of the equipment. The tempered smokey glass front door is reversible and secured with a key lock which keeps the equipment accessible for authorized persons only. These 19" racks come pre-assembled.

HPR506



DOUBLE SECTION 19" RACK - 6 UNITS

The HPR506 is a professional 19" double section wall rack cabinet which ensures maximum installation, connectivity and maintenance ease storing up to 6 units of 19" equipment.

Specifications

DIMENSIONS (H x W x D)	USABLE DEPTH	MAX LOAD	WEIGHT
368 x 600 x 550 mm	510 mm	30 kg	22,2 kg

HPR509



DOUBLE SECTION 19" RACK - 9 UNITS

The HPR509 is a professional 19" double section wall rack cabinet which ensures maximum installation, connectivity and maintenance ease storing up to 9 units of 19" equipment.

Specifications

DIMENSIONS (H x W x D)	USABLE DEPTH	MAX LOAD	WEIGHT
501 x 600 x 550 mm	510 mm	30 kg	26,8 kg

HPR512



DOUBLE SECTION 19" RACK - 12 UNITS

The HPR512 is a professional 19" double section wall rack cabinet which ensures maximum installation, connectivity and maintenance ease storing up to 12 units of 19" equipment.

Specifications

DIMENSIONS (H x W x D)	USABLE DEPTH	MAX LOAD	WEIGHT
638 x 600 x 550 mm	510 mm	30 kg	30,5 kg

Compatible cage nuts for HPR series :



KM600 : M6 Cage nut / 0,5 ~ 2.0 mm plate thickness / zinc plated
(more info p. 23)



EPR SERIES

The best economical solution is guaranteed using the EPR series wall mountable 19" racks which are compliant to ANSI/EIA RS-310D, DIN41491 and IEC60297 standards. Their flexible structure allows installation at any location while their different heights offer a solution for a wide variation of applications. The construction is made using a cold rolled steel frame with a thickness of 1.5 mm and 1,0 mm plates, finished in a black (RAL9004) powder coating. The front is finished with a reversible tempered glass front door. Other features for this product are removable sides, in depth adjustable 19" profiles and a ventilation grid on top.



EPR406
19" wall rack
6 units
450 mm depth



EPR409
19" wall rack
9 units
450 mm depth



EPR412
19" wall rack
12 units
450 mm depth

Compatible cage nuts:  **KM600** : M6 Cage nut / 0.5 ~ 2.0 mm plate thickness / zinc plated (more info p. 23)

Specifications

ARTICLE	DIMENSIONS (H x W x D)	USABLE DEPTH	MAX LOAD
EPR406	350 x 540 x 444 mm	370 mm	50 kg
EPR409	483 x 540 x 444 mm	370 mm	50 kg
EPR412	617 x 540 x 444 mm	370 mm	50 kg

- Reversible door position
- In depth adjustable 19" profiles
- Removable side panels
- Cable entry on top & bottom
- Ventilation grid on top
- Punched square holes for use with snap-in cage nuts
- Static load up to 50 Kg
- ANSI/EIA RS- 310D, DIN41491 and IEC60297 standard
- Pre-assembled



PR SERIES

The PR series are professional standard 19" racks compliant to ANSI/EIA RS-310D, DIN41491 and IEC60297 standards, available in a wide range of heights from 6 to 27 units. They are constructed of 1,5 mm cold rolled steel finished with a black (RAL9004) powder coating with a fine structure. They feature an open front side for direct access and removable rear panel for easy installation and cabling.



PR206
19" rack
6 units
500 mm depth



PR209
19" rack
9 units
500 mm depth



PR212
19" rack
12 units
500 mm depth



PR218
19" rack
18 units
500 mm depth

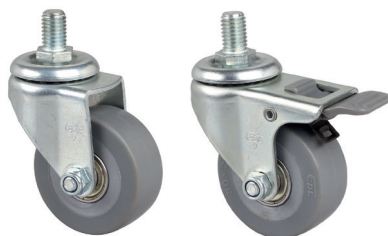
Compatible cage nuts:  **KM600** : M6 Cage nut / 0.5 ~ 2.0 mm plate thickness / zinc plated (more info p. 23)

Specifications

ARTICLE	DIMENSIONS (H x W x D)	USABLE DEPTH	WEIGHT
PR206	338 x 540 x 500 mm	475 mm	14,9 kg
PR209	471 x 540 x 500 mm	475 mm	17,7 kg
PR212	605 x 540 x 500 mm	475 mm	20,5 kg
PR218	872 x 540 x 500 mm	475 mm	26 kg

- Removable rear panel for easy installation & cabling
- Integrated ventilation grid and cable entry on rear panel
- Punched square holes for use with snap-in cage nuts
- Rubber feet on bottom
- ANSI/EIA RS- 310D, DIN41491 and IEC60297 standard
- Assembly in a record breaking time by a single person (+/- 10 min.)

PR210WS



WHEEL SET FOR PR2XX RACKS

A set of 4 solid wheels for PR2xx racks.
Two wheels have a brake.
M8 / ø 50 x 20 mm

NPR SERIES


The NPR series racks are designed for installation of 'half-rack' sized electronic equipment, allowing wall mounted or floor/table standing installation. Half-rack sized equipment popularity is growing in the professional AV and IT market. Typical installation applications include amplifiers, wireless microphone systems, audio & video matrixes and switchers and network switches & routers. They are constructed using a cold rolled steel frame with a thickness of 1,5 mm and 1,2 mm plates, finished in a black (RAL9004) powder coating. The mounting profiles are reversible, allowing installation for both 9.5" (mainly IT) and 10.5" (mainly AV) equipment installation. The front is finished with a reversible tempered glass front door with a wing-knob lock. Other features for this product range are removable and lockable sides, in depth adjustable 19" profiles, ventilation grid in top panel, ...



NPR404
Wall mounted 9.5"/10.5" cabinet
4 units
420 mm depth



NPR406
Wall mounted 9.5"/10.5" cabinet
6 units
420 mm depth

Compatible cage nuts:  **KM600** : M6 Cage nut / 0.5 ~ 2.0 mm plate thickness / zinc plated (more info p. 23)

Specifications

ARTICLE	DIMENSIONS (H x W x D)	USABLE DEPTH	MAX LOAD
NPR404	261 x 325 x 420 mm	360 mm	25 kg
NPR406	350 x 325 x 420 mm	360 mm	25 kg

- Integrated ventilation grid on top
- Removable sides for easy installing & cabling
- Punched square holes for use with snap-in cage nuts
- Cable entry on top, bottom & back
- Tempered glass door with keylock
- Designed to accommodate 'half rack' sized equipment
- Adjustable rack profile between 9.5" and 10.5" width

Reversible profiles allow installation for both 9.5" (IT) and 10.5" (AV) equipment



SPR, WPR AND HPR ACCESSORIES

ALRXX



ALR30 - ALR50

An adjustable 19" L-rail set made of 1,5mm and 3mm thick cold rolled steel finished with a black structured powder coating. The in-depth adjustable L-rails provide extra support when mounting heavy equipment. Universally usable but especially suited to use in combination with OPR series.

Specifications

ARTICLE	DIMENSIONS (H x W x D)	WEIGHT
ALR30	43 x 65 x 281 - 430 mm	0,96 kg
ALR50	43 x 65 x 480 - 830 mm	1,7 kg

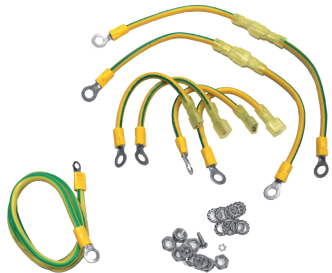
BCO242



VERTICAL CABLE ORGANIZER

The BCO242 is a cable management system for vertical installation in 42 unit SPR series racks. The high capacity design with large number of openings allows simple and clean cable bundling and routing. Installation can be done on both front and rear side while access can be achieved in both directions. It is constructed using both steel and plastic components.

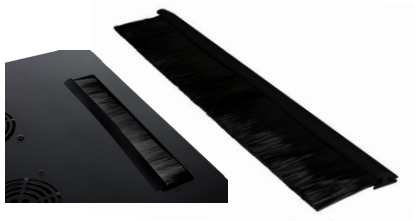
EK100



EARTHING KIT FOR 19" RACK CABINET

EK100 is a universal, easy to use earthing kit for 19" rack cabinets. The kit includes 4 cables with 2 M6 cable lugs for connecting the main chassis to the doors and removable side panels and 1 cable with M6 and M3 cable lug for connecting the main chassis to the grounding point on a PSR power distribution unit. The cables for the removable panels have quick disconnect connectors in the middle for easy disconnection. The cross section of the cables is 6mm² and all mounting hardware is included.

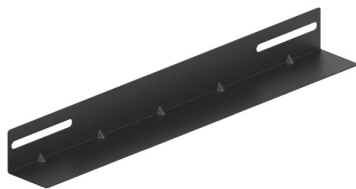
SPR10DC



DUST COVER BRUSH

The SPR10DC is a dust cover brush which is meant to be used for covering the cable inlets which are provided in the SPR and WPR racks. When the racks are installed in industrial environments, through time dust and dirt will enter the racks through all small gaps and openings. In the longer term, this can have a negative influence on the performance of the equipment which is installed in the racks.

SPRXXLR



SPR60LR - SPR80LR - SPR100LR

A 19" L-rail made of 1,2 mm thick cold rolled steel with a black structural powder coating. The rail provides extra support when mounting heavy equipment and the mounting distance can be adjusted to your needs. Comes in pairs.

Specifications

ARTICLE	DIMENSIONS (H x W x D)	WEIGHT
SPR60LR	38 x 65 x 350 mm	0,74 kg
SPR80LR	38 x 65 x 550 mm	0,80 kg
SPR100LR	38 x 65 x 700 mm	1,08 kg

WPRXXLR



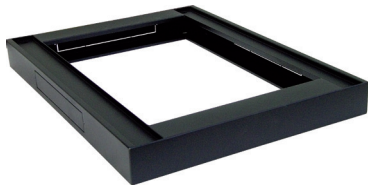
WPR45LR - WPR60LR

A 19" L-rail set made of 1,2 mm thick cold rolled steel with a black structural powder coating. The rail provides extra support when mounting heavy equipment and the mounting distance can be adjusted to your needs.

Specifications

ARTICLE	DIMENSIONS (H x W x D)	WEIGHT
WPR45LR	38 x 45 x 275 mm	0,4 kg
WPR60LR	38 x 65 x 425 mm	0,6 kg

SPRXXPT



SPR60PT - SPR80PT - SPR88PT - SPR100PT

A 19" rack plinth made of steel with a plate thickness of 1,2 mm and provided with a black (RAL9004) structured powder coating. The plinth raises the rack off the floor allowing easy cable access.

Specifications

ARTICLE	DIMENSIONS (H x W x D)	WEIGHT
SPR60PT	80 x 600 x 600 mm	6 kg
SPR80PT	80 x 600 x 800 mm	7,6 kg
SPR88PT	80 x 800 x 800 mm	9 kg
SPR100PT	80 x 600 x 1000 mm	8,9 kg

SPRXXFS WPRXXFS



SPR60FS - SPR80FS / WPR45FS - WPR60FS

A 19" fixed shelf made of steel with a plate thickness of 1,2 mm and provided with a black (RAL9004) structured powder coating. The shelf can be used to store equipment which doesn't contain a standard 19" mounting fixture. For use with SPR or WPR racks only.

Specifications

ARTICLE	DIMENSIONS (H x W x D)	WEIGHT
SPR60FS	15 x 470 x 350 mm	1,8 kg
SPR80FS	15 x 470 x 550 mm	2,8 kg
WPR45FS	15 x 490 x 275 mm	1,8 kg
WPR60FS	15 x 490 x 425 mm	2,8 kg

SPRXXRF



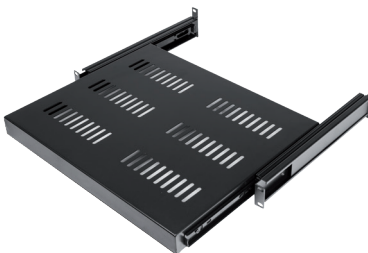
SPR60RF - SPR80RF - SPR100RF

A 19" cooling roof fan unit made of steel with a plate thickness of 1,2 mm and provided with a black (RAL9004) structured powder coating which is used to improve the air circulation and help remove hot air from the rack. The fans run at medium speed and need to be fed with 240V AC at 50/60Hz. For use with SPR racks only.

Specifications

ARTICLE	DIMENSIONS (H x W x D)	WEIGHT	NOISE	POWER
SPR60RF	50 x 450 x 363 mm	2,3 kg	< 51 dB	2 x 20 W
SPR80RF	50 x 450 x 363 mm	3,5 kg	< 57 dB	4 x 20 W
SPR100RF	30 x 450 x 740 mm	4,4 kg	< 57 dB	4 x 20 W

SS1XXX



SS160 - S180

A 19" sliding shelf made of steel with a thickness of 1,2 mm with a black structural powder coating. The shelf can be used to store equipment which doesn't contain a standard 19" mounting fixture or equipment that needs to be accessed frequently. They come equipped with improved rails for an even larger extension.

Specifications

ARTICLE	DIMENSIONS (H x W x D)	USABLE DEPTH	WEIGHT	MAX LOAD
SS160	71 x 484 x 350 mm	350 mm	3,5 kg	30 kg
SS180	43 x 484 x 550 mm	530 mm	4,1 kg	30 kg

WPR10CL



WPR10CL

The WPR10CL is a 3 digit combination lock specifically developed for the CAYMON WPR and HPR series. By installing the WPR10CL you can create a secure lockable 19" cabinet perfect for storage of precious 19" equipment.

SPR10CSS



SPR10CSS

The SPR10CSS connects 2 racks together without nuts. Every rack is fitted with holes on top allowing for a quick and easy installation of the SPR10CSS. This results in a good strong connection yet maintaining nice clean look. For use with SPR & WPR racks.

WPR10RF



WPR10RF

The WPR10RF is a 120 mm sleeve bearing axial ventilation fan for installation to the top compartment of any matching rack. When installed to the provided mounting holes, the rising warm air will be removed from the top section, improving the air flow throughout the cabinet.

Specifications

SPEED	NOISE	LIFE TERM	POWER CONS.	VOLTAGE
2600 RPM	45 dB	30.000 HRS	30 Watt	220 ~ 240V AC / 50 ~ 60 Hz

NPR ACCESSORIES

A range of accessories for the NPR series racks offers solutions for making your installation clean and complete. Wide mounting slots allow installation in combination with 10.5" equipment installations. All accessories are constructed of cold rolled steel finished in black (RAL9004) powder coating.

BSFN01



10.5" BLIND PLATE STEEL - 1 UNIT

Specifications

Dimensions (H x W x D) : 43,7 x 264 x 10 mm
Weight : 0,17 kg

BSVN01



10.5" VENTILATED BLIND PLATE STEEL - 1 UNIT

Specifications

Dimensions (H x W x D) : 43,7 x 264 x 10 mm
Weight : 0,15 kg

RDN110L



10.5" RACK DRAWER - 1 UNIT WITH KEY LOCK

Specifications

Dimensions (H x W x D) : 43,7 x 264 x 302 mm
Weight : 2,52 kg

ISN110



10.5" STANDARD SHELF - 1 UNIT

For non rack mountable appliances

Specifications

Dimensions (H x W x D) : 43,7 x 264 x 300 mm
Weight : 0,87 kg

RACK PLATES

BP106

19" PANEL

19" blind plate, 1 unit, 6 D-size holes
Dimensions (H x W x D) : 43,7 x 483 x 10 mm
Weight : 0,26 kg



BP108

19" PANEL

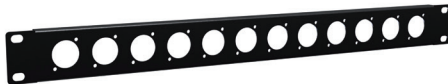
19" blind plate, 1 unit, 8 D-size holes
Dimensions (H x W x D) : 43,7 x 483 x 10 mm
Weight : 0,28 kg



BP112

19" PANEL

19" blind plate, 1 unit, 12 D-size holes
Dimensions (H x W x D) : 43,7 x 483 x 10 mm
Weight : 0,30 kg



BSG01H

19" PANEL

19" grill security panel, 1 unit, hexagonal perforation
Dimensions (H x W x D) : 43,7 x 483 x 25 mm
Weight : 0,25 kg



BSK124

19" PANEL

19" Keystone blind panel, 1 unit, 24x Keystone
Dimensions (H x W x D) : 44 x 483 x 130,4 mm
Weight : 0,65 kg



BDR03

19" DIN RAIL MOUNTING UNIT FOR 24 MODULES

19" Rack mountable (3 HE)
Dimensions (H x W x D) : 132,5 x 483 x 92 mm
Weight : 1,49 kg



BP106T

19" PANEL

19" blind plate, 1 unit, 6 D-size holes and tension relief
Dimensions (H x W x D) : 43,7 x 483 x 83 mm
Weight : 0,66 kg



BP108T

19" PANEL

19" blind plate, 1 unit, 8 D-size holes and tension relief
Dimensions (H x W x D) : 43,7 x 483 x 83 mm
Weight : 0,65 kg



BP112T

19" PANEL

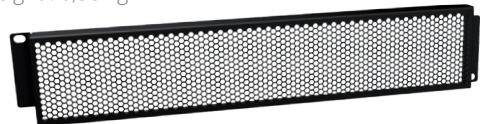
19" blind plate, 1 unit, 12 D-size holes and tension relief
Dimensions (H x W x D) : 43,7 x 483 x 83 mm
Weight : 0,63 kg



BSG02H

19" PANEL

19" grill security panel, 2 units, hexagon perforation
Dimensions (H x W x D) : 88,1 x 483 x 25 mm
Weight : 0,38 kg



ID110

19" UNDER DESK MOUNT BRACKET

19" under desk mount bracket, 1 unit
Dimensions (H x W x D) : 53 x 489 x 150 mm
Weight : 0,46 kg



BLB01

19" RACKMOUNT CABLE LACING BAR

Dimensions (H x W x D) : 12 x 483 x 6 mm
Weight : 0,09 kg



BDP06

DIN RAIL BLANKING STRIP - 6 MODULE - 10 STRIPS

Dimensions (H x W x D) : 52 x 108 x 16,3 mm
Weight : 0,02 kg



BLIND PLATES

The range of blind panels includes several models whereof each model is available in different versions in terms of dimensions and/or assembly possibilities. All blind plates are made of 1,5 mm thick cold rolled steel with a U-shaped structure which provides improved strength. They are all finished with a black (RAL9004) powder coating with fine structured finish which ensures an improved scratch resistance.

BLIND PLATES

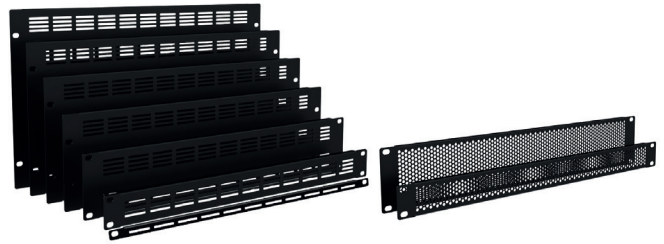
19" blind cover made of steel with a black structural powder coating. With a thickness of 1,5 mm. Available in 0.33, 0.5, 1, 2, 3, 4, 5 and 6 units.



ARTICLE	DESCRIPTION
BSF003	19" blind plate steel - 0.33 unit
BSF005	19" blind plate steel - 0.5 unit
BSF01	19" blind plate steel - 1 unit
<small>(EASY CUSTOMIZATION)</small> BSF01A	19" blind plate aluminum - 1 unit
BSF02	19" blind plate steel - 2 unit
<small>(EASY CUSTOMIZATION)</small> BSF02A	19" blind plate aluminum - 2 unit
BSF03	19" blind plate steel - 3 unit
BSF04	19" blind plate steel - 4 unit
BSF05	19" blind plate steel - 5 unit
BSF06	19" blind plate steel - 6 unit

VENTILATED BLIND PLATES

19" blind cover made of steel with a black structural powder coating. With a thickness of 1,5 mm and ventilation openings. Available in 0.33, 1, 2, 3 and 4 units.



ARTICLE	DESCRIPTION
BSV003	19" ventilated blind plate steel - 0.33 unit
BSV01	19" ventilated blind plate steel - 1 unit
BSV01H	19" ventilated blind plate steel - 1 unit (Hexagonal perforation)
BSV02	19" ventilated blind plate steel - 2 unit
BSV02H	19" ventilated blind plate steel - 2 unit (Hexagonal perforation)
BSV03	19" ventilated blind plate steel - 3 unit
BSV04	19" ventilated blind plate steel - 4 unit

BLIND PLATES WITH BRUSH

19" blind panels with brush strip which can be installed in any 19" enclosure providing an inlet through which any cable can pass without having any openings or holes in the enclosure. The brush will blend nicely around the passing cable, preventing any unwanted dust or dirt from entering the cabinet.



BSB01 + BSB02

19" BLIND PLATE WITH BRUSH - 1 UNIT
Dimensions (H x W x D) : 43,7 x 483 x 10 mm
Weight : 0,196 kg

19" BLIND PLATE WITH BRUSH - 2 UNITS
Dimensions (H x W x D) : 88,1 x 483 x 10 mm
Weight : 0,338 kg

BLIND PLATE WITH SERVICE DOOR

The BSD02 is a hinged blind panel with slam latch which can be installed to any 19" enclosure. This creates a fully closed rack cabinet while offering easy and instant access inside the cabinet for service and maintenance.



BSD02

19" PANEL
19" blind cover with service door, 2 unit
Dimensions (H x W x D) : 88,1 x 483 x 21 mm

CABLE ORGANIZER

BCO101

HORIZONTAL CABLE ORGANIZER

The BCO101 horizontal cable management system can be installed to any 19" rack enclosure occupying one single rackspace. It organizes small to large cable bundles on any device or patch panel, keeping a clean and beautiful overview on the wiring. Access can be achieved in both directions and it is constructed using ABS materials.

Dimensions (H x W x D) : 44 x 482 x 65,5 mm
Weight : 0,23 kg



SCREWS & CAGE NUTS

KM500+KM600+ KM600A

CAGE NUTS

KM500 :
M5 Cage nut / 0.5 ~ 2.0 mm plate thickness / zinc plated
KM600 :
M6 Cage nut / 0.5 ~ 2.0 mm plate thickness / zinc plated
KM600A :
M6 Cage nut / 2.0 ~ 3.5 mm plate thickness / zinc plated

Sold in packs of 100 pcs



KS500 + KS600

BOLTS

KS500 :
M5 x 16 mm / DIN7985 / Black phosphated incl nylon washer
KS600 :
M6 x 16mm / DIN7985 / Black phosphated incl nylon washer

Sold in packs of 100 pcs



KB600

BLIND BOLT M6

Blind bolt M6 x 10 mm + Flange nut / black phosphated

Sold in packs of 100 pcs



POWER DISTRIBUTION

PSR107UKS



19" POWER DISTRIBUTION UNIT UK SOCKET

Dimensions (H x W x D) : 45,2 x 480 x 44,9 mm
Weight : 0,82 kg
13A ~ 250V AC / 3250 W Max



PSR107UKS/B : 7 x UK socket with front switch & switch cover

PSR119ES



19" POWER DISTRIBUTION UNIT C13 SOCKET

Dimensions (H x W x D) : 44,4 x 482,6 x 45 mm
Weight : 0,8 kg
16A ~ 250V AC / 4000 W Max



PSR119ES/B : 9 x EC C13 socket (EURO plug) with rear switch

PSR109F + PSR109FS + PSR119FS



19" POWER DISTRIBUTION UNIT FRENCH SOCKET

Dimensions (H x W x D) : 44,4 x 482,6 x 45 mm
Weight : 0,8 kg
16A ~ 250V AC / 4000 W Max



PSR109F/B : 9 x French socket

PSR109FS/B : with front switch & switch cover

PSR119FS/B : with rear switch

PSR109G + PSR109GS + PSR119GS



19" POWER DISTRIBUTION UNIT GERMAN SOCKET

Dimensions (H x W x D) : 44,4 x 482,6 x 45 mm
Weight : 0,8 kg
16A ~ 250V AC / 4000 W Max



PSR109G/B : 9 x German socket

PSR109GS/B : with front switch & switch cover

PSR119GS/B : with rear switch

PSR269FS + PSR269GS



19" POWER DISTRIBUTION UNIT - FRONT AND REAR SOCKETS - DOUBLE SWITCHED

Dimensions (H x W x D) : 44,4 x 482,6 x 116 mm
Weight : 1,7 kg
16A ~ 250V AC / 4000 W Max



PSR269FS/B : French 6 x front sockets + 9 x rear sockets

PSR269GS/B : German 6 x front sockets + 9 x rear sockets

An indispensable tool for every flight case or 19" rack with high-value equipment. These units feature 9 power sockets on the backside which are protected by the 16A circuit breaker on the front and can provide up to 4000W of power. 2 Handy USB power outlets on the front of the PSR can be used to charge devices such as tablets, phones and other mobile devices. Another great feature of both power distribution units is the built-in rack light which uses a strip of daylight white LEDs that can be dimmed with a rotary dial on the front. The PSR529 is additionally equipped with surge protection and an AC voltage and current indicator on the front of the unit that will give the user visual feedback of the input voltage before turning on the equipment and amperage drawn once the system is in use, invaluable information for system technicians.

PSR429F + PSR429G



19" POWER DISTRIBUTION UNIT LIGHT / USB / FUSE

The PSR429 series includes a switchable LED rack light, two front USB jacks and a 16 Amps circuit breaker on the front panel of the unit. Power distribution for up to nine devices is made possible using the rear output sockets.

- Dimmable rack lighting (LED) with ON/OFF switch
- Black aluminium housing with steel side ears
- 2 x Front USB charging connection (2.1A combined)
- 2.5 meter connection cable
- Chassis earth connection point
- Male Schuko (CEE 7/7) input connection

Dimensions (H x W x D) : 44,4 x 482,6 x 157 mm (with mounting ears)
16A ~ 250 V AC / 4000 W Max

PSR429F: 9 x French (Type E) socket
PSR429G: 9 x German (Type F) socket

PSR529F + PSR529G



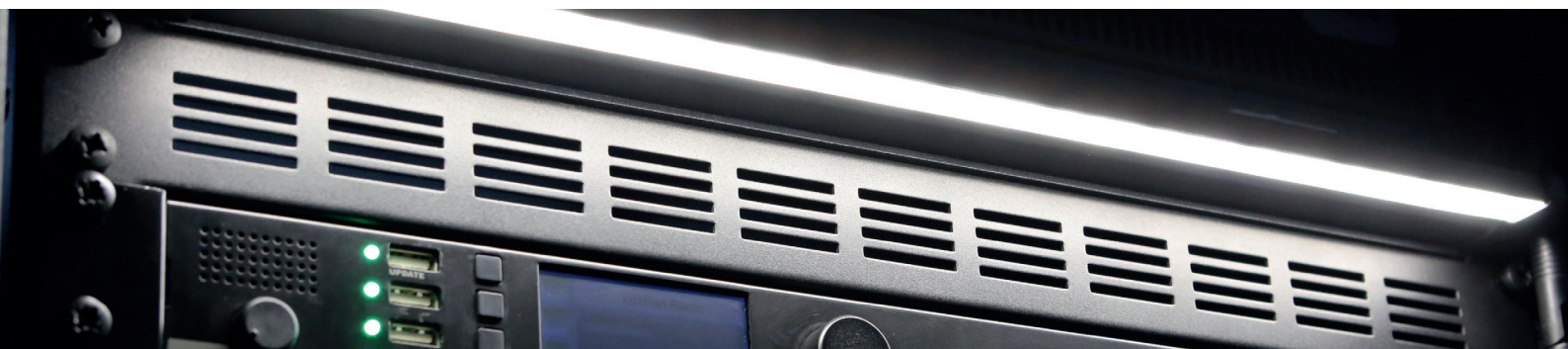
19" POWER DISTRIBUTION UNIT LIGHT / USB / FUSE / SURGE / DISPLAY

The PSR529 series includes a switchable LED rack light, two front USB jacks and a 16 Amps circuit breaker on the front panel of the unit. Power surge & spike protection is offered by the internal protector network, while a voltage and current indicator allow continuous voltage and power consumption monitoring. Power distribution for up to nine devices is made possible using the rear output sockets.

- Voltage & current display
- Surge Protection
- Dimmable rack lighting (LED) with ON/OFF switch
- Black aluminium housing with steel side ears
- 2 x Front USB charging connection (2.1A combined)
- 2.5 meter connection cable
- Chassis earth connection point
- Male Schuko (CEE 7/7) input connection

Dimensions (H x W x D) : 44,4 x 482,6 x 157 mm (with mounting ears)
16A ~ 250 V AC / 4000 W Max

PSR529F: 9 x French (Type E) socket
PSR529G: 9 x German (Type F) socket



INTELLIGENT POWER SEQUENCER

The PSQ108 is an intelligent power sequencer with 8 x IEC C13 outputs which can be remotely switched using AUDAC Touch™ via TCP/IP or RS-232 connection. It also features front controls for manual control. Several PSQ108 devices can be daisy chained together so that only one IP address is needed for controlling all units. The sequential power on/off function reduces the inrush current of the connected devices when power is turned on and by using the configurable delay times, the order in which the devices turn on can be set. Other features include short circuit and overcurrent protection by means of a 16A circuit breaker, a voltage and current display and a front USB charging port (max 1000mA).

- AUDAC Touch™ compatible via TCP/IP and RS-232
- Daisy-chaining possible
- Manual control possibilities
- 2.5 meter connection cable (3 x 2.5mm²)
- Male Schuko (CEE 7/7) input connection

PSQ108



INTELLIGENT POWER SEQUENCER - 8 X IEC C13 OUTPUTS

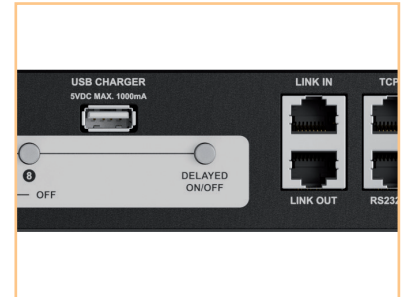
19" power sequencer, 1 unit
 Dimensions (H x W x D): 44 x 483 x 354 mm
 Weight: 5,05 kg
 Power handling input: 16A ~ 230V AC / 3680 W Max.
 Power handling per output: 10A ~ 230V AC / 2300 W Max.
 USB power handling: 5V DC / 1000mA Max.



Overcurrent and short circuit protection by 16A circuit breaker



Voltage & current display



Sequential power on/off



RACK SHELVES

The IS series are 19" fixed shelves which are constructed of cold rolled steel with a plate thickness of 1,5 mm. They are available in three models for 1 unit, 2 units and 3 units rack mounting with each of them having a usable depth of 325 mm. The special cutout structure allows easy and effective rack assembly for any device which is not standard fitted with 19" mounting ears, including wire fixation. They are all finished with a black (RAL9004) powder coating with fine structured finish which ensures an improved scratch resistance.

IS110



19" STANDARD SHELF - 1 UNIT

For non rack mountable appliances
Dimensions (H x W x D) : 43,7 x 483 x 331,5 mm
Usable depth : 325 mm
Weight : 1,99 kg

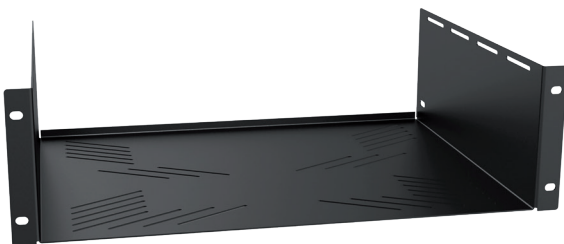
IS210



19" STANDARD SHELF - 2 UNITS

For non rack mountable appliances
Dimensions (H x W x D) : 88,1 x 483 x 331,5 mm
Usable depth : 325 mm
Weight : 2,36 kg

IS310



19" STANDARD SHELF - 3 UNITS

For non rack mountable appliances
Dimensions (H x W x D) : 132,5 x 483 x 331,5 mm
Usable depth : 325 mm
Weight : 2,73 kg

DRAWERS

The RDx20x series of 19" rack drawers comes available in 3 different unit heights with and without lock. These rack drawers can be used for storage of any belongings related to the rack mounted equipment, such as cables, microphones, wireless transmitters, headsets, remote controls, instruction manuals, etc. The chassis is constructed of 1,5 mm thick cold rolled steel, while the tray is finished in 1,2 mm thick cold rolled steel. Both finished in a black (RAL9004) powder coating with fine structured finish which ensures an improved scratch resistance. They feature full extension 3 section drawer rails, pushout holes on the back of the tray for cable insertion, a rubber anti slip liner and optional back supports for increased load capacity.

- 1.5 mm powder coated chassis
- Pushout holes for cable insertion
- Rubber anti slip liner
- Back supports for increased load capacity (optional)



Full-width handle



Pushout holes on the back of the tray



Optional back supports for increased load capacity

RD120L



DRAWER - 1 UNIT

19" drawer with lock, 1 unit
 Dimensions (H x W x D): 43,7 x 483 x 393 mm
 Inside dimension (H x W x D): 38 x 400,6 x 367,4 mm
 Weight: 5,31 kg
 Max load: 8 kg

RD220L



DRAWER - 2 UNITS

19" drawer with lock, 2 units
 Dimensions (H x W x D): 88,1 x 483 x 393 mm
 Inside dimension (H x W x D): 82,4 x 400,6 x 367,4 mm
 Weight: 6,55 kg
 Max load: 20 kg
 Max load with back supports: 40 kg



RD220 drawer without lock

RD320L



DRAWER - 3 UNITS

19" drawer with lock, 3 units
 Dimensions (H x W x D): 132,5 x 483 x 393 mm
 Inside dimension (H x W x D): 126,8 x 400,6 x 367,4 mm
 Weight: 7,68 kg
 Max load: 20 kg
 Max load with back supports: 40 kg



RD320 drawer without lock

RD2S



BACK SUPPORTS FOR RDX20X SERIES

Rear support bracket for RDx20x series rack drawers
Dimensions (H x W x D) : 43,7 x 30,3 x 327,1 mm
Weight : 0,44 kg







MODULAR SOLUTIONS

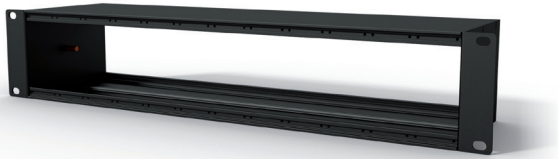
CASY SERIES

The CASY system joins the CAYMON product range as a flexible solution for a wide variety of applications in terms of system integration and connectivity. This system consists of an entire product range containing different base frames which allow an extensive range of optional modules to be installed. This results in a plug and play, solderless system offering flexible solutions in terms of connectivity, power distribution, internal rack supplies and many more.

The CASY system is built-up around a main-chassis, available in a range of sizes, mountings and depths. The range of modules goes from standard closed and vented blind panels to connection modules featuring audio connectors, video and data connectivities, power switches & sockets, volume controllers, strain reliefs and many more. The number of configurations is enormous and the number of applications where this system can offer tailored solutions is infinite.

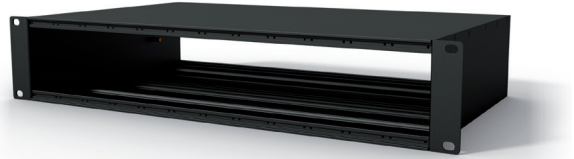
19" RACK MOUNT CHASSIS

Front & back side module mounting
Structured black powder coating (RAL9004)
Aluminum extruded frame with steel side ears



CASY001

CHASSIS 12 SPACE
2HE 19" mounting
120 mm depth



CASY002

CHASSIS 12 SPACE
2HE 19" mounting
270 mm depth

STRAIN RELIEF

Structured black powder coating (RAL9004)
1.5 mm cold rolled steel



CASY021

STRAIN RELIEF 12 SPACE
for use with CASY001/B and CASY002/B

SURFACE MOUNT CHASSIS



CASY003

CHASSIS 6 SPACE - 90° SURFACE MOUNT

The CASY003 is a table / desk mountable chassis which can be fitted with 6 modules from the CASY range. The flexible and modular structure ensures maximum versatility, allowing the system to be adapted to project specific requirements. Possibilities range from audio, video and data interconnection to power distribution, control panels, power supplies and many more.

Specifications

ARTICLE	DIMENSIONS (H x W x D)	WEIGHT
CASY003	93.1 x 267 x 120 mm	0,963 kg



STAGE BOX

- Included shock bumpers
- Aluminum extruded construction with cold rolled steel sides
- Flexible structure for system integration & connectivity
- Wide variation of compatible modules available
- Pre-threaded mounting profile for easy assembly
- Structured and scratch resistant black powder coating
- Removable cable gland for D-size connectors at choice
- Long cable gland provided



CASY044S

STAGE BOX 4 SPACE - WITH SHOCK BUMPER

Dimensions (H x W x D) : 108,5 x 165 x 85,4 mm
Usable module depth : 60 mm
Weight : 0,51 kg

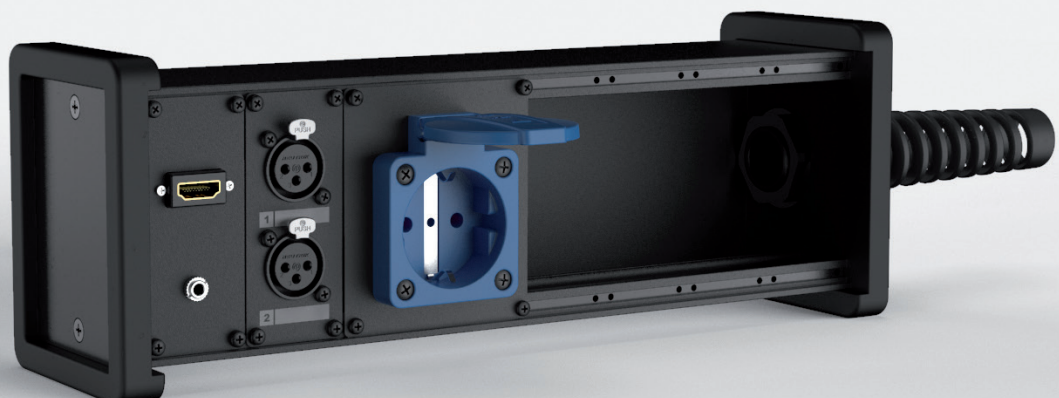


CASY048S

STAGE BOX 8 SPACE WITH SHOCK BUMPER

Dimensions (H x W x D) : 108,5 x 309 x 85,4 mm
Usable module depth : 60 mm
Weight : 0,82 kg

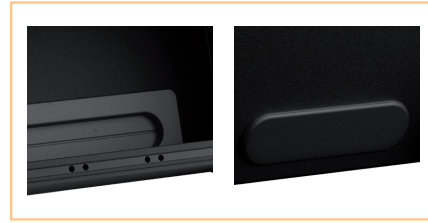
Removable cable gland for D-size connectors at choice



DESKTOP CHASSIS

- Integrated rubber cable grommet
- Flexible structure for system integration & connectivity
- Wide variation of compatible modules available
- 18° incline angle
- Structured and scratch resistant black powder coating
- Aluminium extruded frame with rounded ABS sides
- Pre-threaded mounting profile for easy assembly

Integrated rubber cable grommet



CASY014G

ON-TABLE CHASSIS 4 SPACE - WITH GROMMET

Dimensions (H x W x D) : 108,1 x 172 x 88,2 mm
Usable module depth : 60 mm
Weight : 0,37 kg



CASY018G

ON-TABLE CHASSIS 8 SPACE - WITH GROMMET

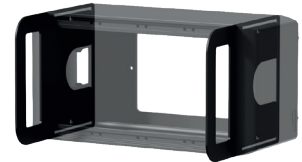
Dimensions (H x W x D) : 108,1 x 316 x 88,2 mm
Usable module depth : 60 mm
Weight : 0,63 kg

ON-WALL CHASSIS

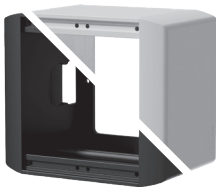
- Front module mounting
- Large access holes on rear
- Structured and scratch resistant black powder coating
- Aluminum extruded construction with rounded ABS sides
- Cable duct and cable gland entry provided
- Pre-threaded mounting profile for easy assembly

ACCESSORIES AVAILABLE :

CASY030E



CASY PROTECTION EAR SET FOR CASY03X SERIES



CASY032

ON-WALL CHASSIS 2 SPACE

Dimensions (H x W x D) : 88,1 x 100 x 65 mm
Usable module depth : 60 mm
Weight : 0,19 kg
Available in Black (/B) and White (/W)



CASY034

ON-WALL CHASSIS 4 SPACE

Dimensions (H x W x D) : 88,1 x 172 x 65 mm
Usable module depth : 60 mm
Weight : 0,42 kg
Available in Black (/B) and White (/W)



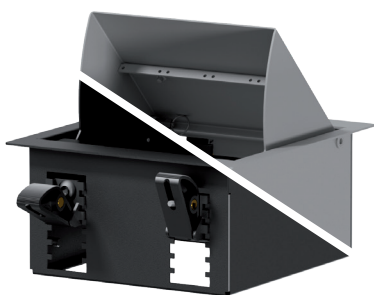
CASY038

ON-WALL CHASSIS 8 SPACE

Dimensions (H x W x D) : 88,1 x 316 x 65 mm
Usable module depth : 60 mm
Weight : 0,60 kg

DESKTOP MODULE

- 45° Rotatable lid
- BlindSnap™ mounting system
- Cable entry with brush
- Large access holes on rear
- Structured powder coating
- Cold rolled steel construction
- For desktop and gypsum wall applications
- Available colours : Black - RAL9004 (/B) & Grey RAL9006 (/G)



CASY024

CASY IN-TABLE MOUNT BOX - 4 SPACE

Dimensions (H x W x D) : 198 x 178 x 91,5 mm
Cut-out measurement (H x W) : 175 x 161 mm
Clamping range : 6 - 50 mm
Usable module depth : 68,5 mm
Weight : 1,62 kg
Available colours: Black (/B) & Grey (/G)

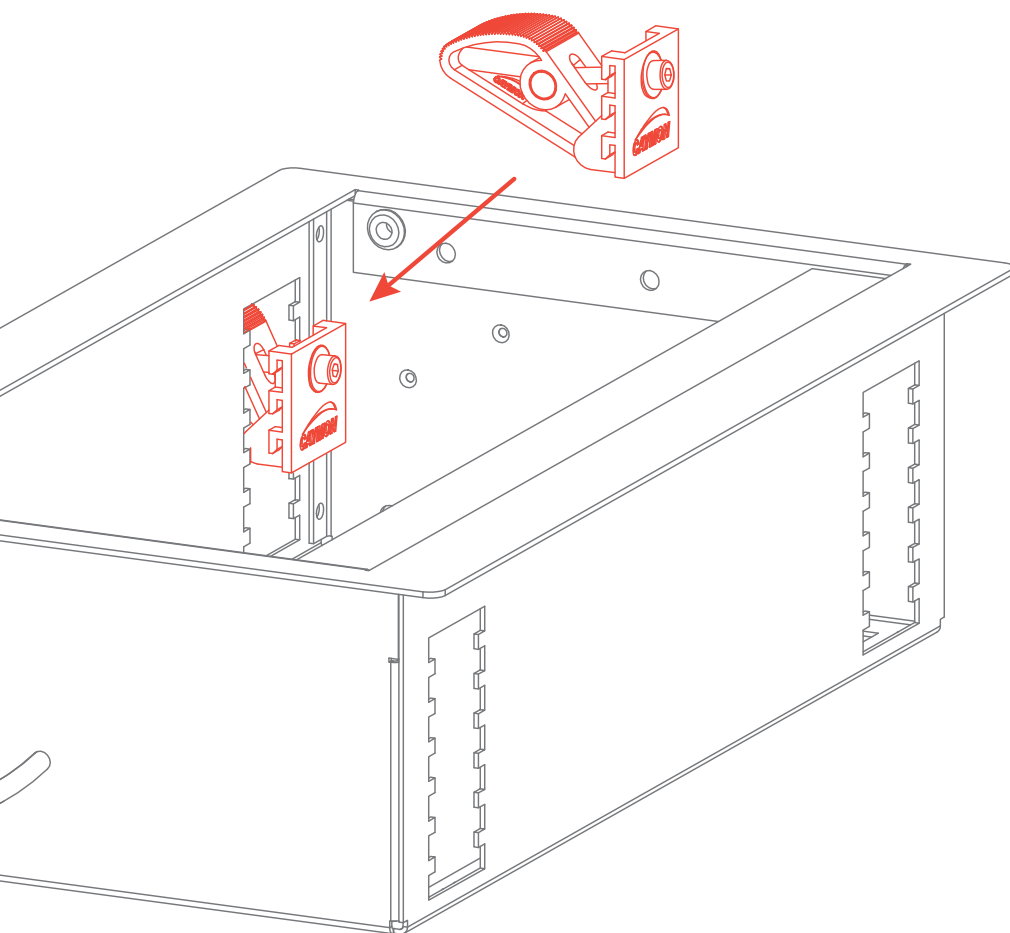


CASY028

CASY IN-TABLE MOUNT BOX - 8 SPACE

Dimensions (H x W x D) : 198 x 322 x 91,5 mm
Cut-out measurement (H x W) : 175 x 305 mm
Clamping range : 6 - 50 mm
Usable module depth : 68,5 mm
Weight : 2,31 kg
Available colours: Black (/B) & Grey (/G)



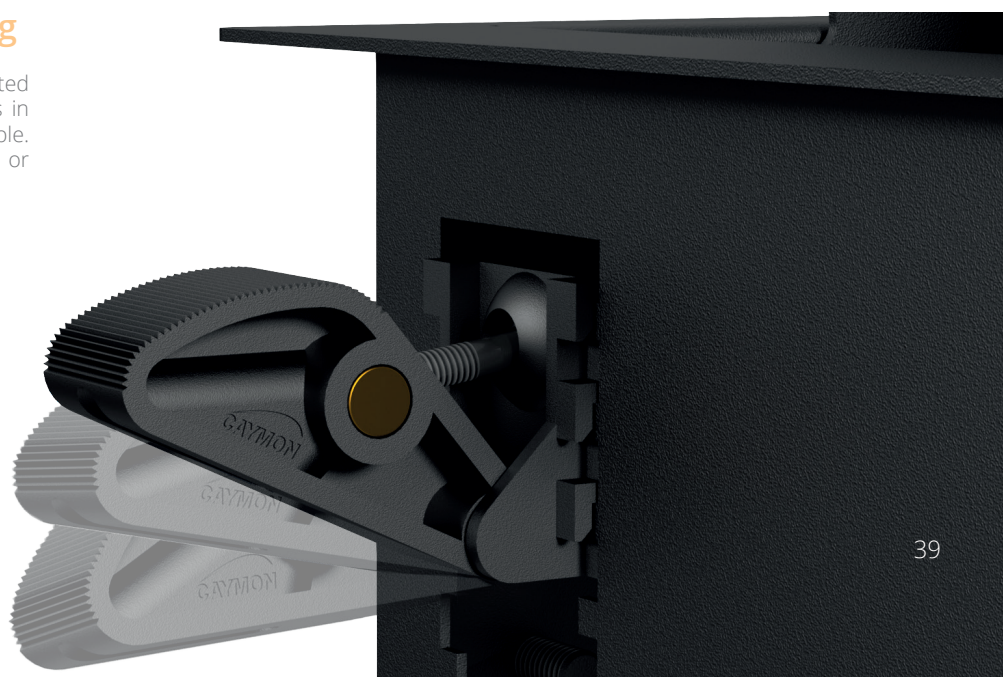


BlindSnap™

The BlindSnap™ system allows both placement and fixing from the top side of the mount. No more fiddling with screws on the bottom of the table while you try to tighten them from the top.

Easy & flexible mounting

This blind fixing system can be easily adjusted to any type of table thickness and stays in place without the use of screws in the table. The mount could even be used in glass or thin metal tops (min. thickness 5,6 mm).



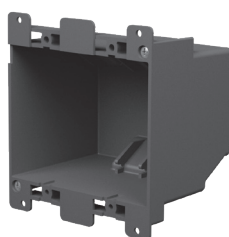
IN-WALL FRAME



CASY052

IN-WALL FRAME - 2 SPACE

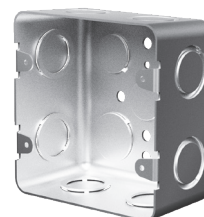
Dimensions (H x W x D) :
120 x 120 x 14 mm



WB20/FG

FLUSH MOUNT BOX FOR CASY052 - HOLLOW WALL

Dimensions (H x W x D) :
109,4 x 101 x 72 mm



WB20/FS

FLUSH MOUNT BOX FOR CASY052 - SOLID WALL

Dimensions (H x W x D) :
101,3 x 102 x 54 mm



- Flush mount installation
- Up to 2 CASY modules
- Zinc plated metal subframe
- Mounting box available for solid or hollow wall





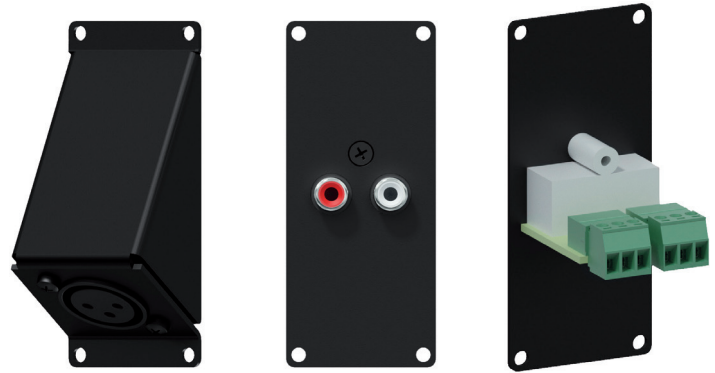
Galvanic Isolator Unit
Shielded

IP54

1 SPACE ELEMENTS

Structured black powder coating (RAL9004)
1.5 mm cold rolled steel
35.5 mm (W) x 82.1 mm (H)

solderless



ARTICLE	DESCRIPTION
CASY101	Closed blind plate steel
CASY101A	Closed blind plate aluminum
CASY102	Vented blind plate
CASY103	Cover plate with D-size hole
CASY103A	Cover plate with D-size hole aluminum
CASY104	Angled cover plate with D-size hole
CASY105	Cover plate with 2 D-size holes
CASY105A	Cover plate with 2 D-size holes aluminum
CASY106	Cover plate with 1 Keystone hole
CASY107	Cover plate with 2 Keystone holes
CASY108	Cover plate with 1 x powerCON TRUE1 outlet connector hole
Ⓜ CASY121	Cover plate with Neutrik XLR female to 3-pin terminal block
Ⓜ CASY122	Cover plate with Neutrik XLR male to 3-pin terminal block
Ⓜ CASY123	Angled cover plate with Neutrik XLR female to 3-pin terminal block
Ⓜ CASY124	Angled cover plate with Neutrik XLR male to 3-pin terminal block
Ⓜ CASY125	Cover plate with 2 x Neutrik XLR female to 3-pin terminal block
Ⓜ CASY126	Cover plate with 2 x Neutrik XLR male to 3-pin terminal block
CASY131	Cover plate with 2 x RCA gender
CASY132	Cover plate with 2 x RCA to 3-pin terminal block
CASY135	Cover plate with 3.5 mm Jack gender
CASY136	Cover plate with 3.5 mm Jack to 3-pin terminal block
CASY138	Cover plate with 2 x 3-pin terminal block to 3-pin terminal block line level
Ⓜ CASY141	Cover plate with Neutrik Speakon to 4-pin terminal block
Ⓜ CASY142	Cover plate with 2 x Neutrik Speakon to 4-pin terminal block
Ⓜ CASY143	Angled cover plate with Neutrik Speakon to 4-pin terminal block
CASY148	Cover plate with 2 x 2-pin terminal block to 2-pin terminal block speaker level
CASY151	Cover plate with VGA and 3,5 mm Jack gender
CASY152	Cover plate with HDMI and 3,5 mm Jack gender
CASY153	Cover plate with HDMI 2.1 pigtail gender
CASY161	Cover plate with USB 2.0 A gender
Ⓜ CASY162	Cover plate with USB 2.0 A to 4-pin terminal block
CASY163	Cover plate with USB 3.2 GEN 2 type C pigtail gender
Ⓜ CASY167	Cover plate with Neutrik Ethercon to RJ45
CASY168	Cover plate with 2 x Neutrik Ethercon to RJ45
CASY181	Cover plate with Euro power male to GST18 female
CASY182	Cover plate with Euro power female to GST18 male
CASY191	Cover plate with stereo galvanic isolator (shielded)

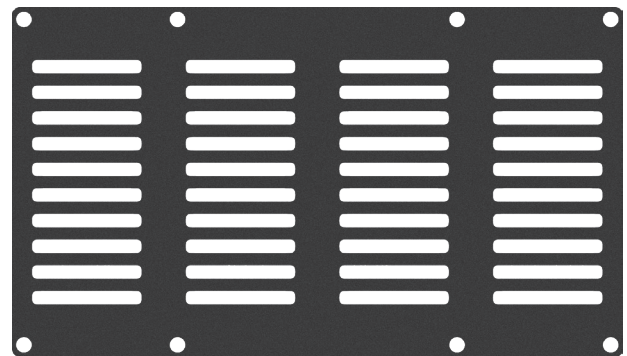
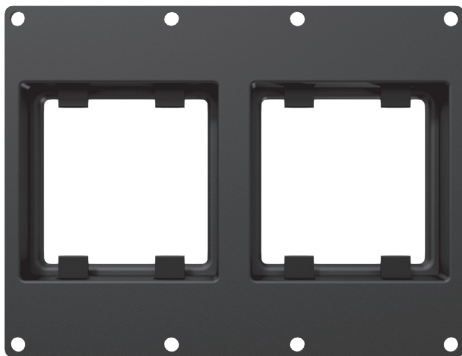
2 SPACE ELEMENTS

Structured black powder coating (RAL9004)
1.5 mm cold rolled steel
71.5 mm (W) x 82.1 mm (H)

solderless



ARTICLE	DESCRIPTION
CASY201	Closed blind plate steel
CASY201A	Closed blind plate aluminum
CASY202	Vented blind plate
CASY203	Cover plate with 4 x D-size hole
CASY203A	Cover plate with 4 x D-size hole aluminum
CASY205	Cover plate with 1 x G-size hole
CASY282	Cover plate with 2 x Euro power female to GST18 male
CASY285F	Cover plate with French schuko female to GST18 male (IP44 protection)
CASY285G	Cover plate with German schuko female to GST18 male (IP44 protection)
CASY285UK	Cover plate with UK socket female to GST18 male (IP44 protection)



3 SPACE ELEMENTS

Structured black powder coating (RAL9004)
1.5 mm cold rolled steel
107.5 mm (W) x 82.1 mm (H)

ARTICLE	DESCRIPTION
CASY301	Closed blind plate
CASY302	Vented blind plate
CASY303	2 x 45 x 45 mm standard sized mounting frame for products such as matrix control panels

4 SPACE ELEMENTS

Structured black powder coating (RAL9004)
1.5 mm cold rolled steel
143.5 mm (W) x 82.1 mm (H)

ARTICLE	DESCRIPTION
CASY401	Closed blind plate
CASY402	Vented blind plate

CP45 SERIES

The CP45 series are 45 x 45 mm connection modules with various power sockets or switches available in black color. The 45 x 45 mm size is compatible with CASY303 and standard 45 x 45 mm mounting frames and cover plates. Electrical connection is made using screw terminals at the back of the module.



CP45PF

CONNECTION MODULE - FRENCH POWER SOCKET

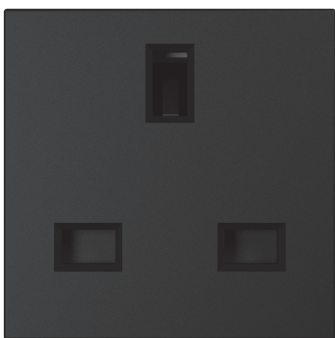
Connection made by using screw terminals
Compatible with CASY303 and standard 45 x 45 mm frames
Dimensions: 45 x 45 mm
Built-in depth: 30 mm



CP45PG

CONNECTION MODULE - GERMAN POWER SOCKET

Connection made by using screw terminals
Compatible with CASY303 and standard 45 x 45 mm frames
Dimensions: 45 x 45 mm
Built-in depth: 30 mm



CP45PUK

CONNECTION MODULE - UK POWER SOCKET

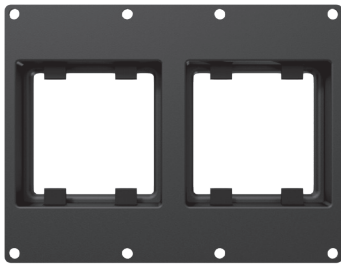
Connection made by using screw terminals
Compatible with CASY303 and standard 45 x 45 mm frames
Dimensions: 45 x 45 mm
Built-in depth: 30 mm



CP45PUSB

CONNECTION MODULE - CHARGER MODULE WITH USB TYPE A AND TYPE C

Connection made by using screw terminals
Compatible with CASY303 and standard 45 x 45 mm frames
Dimensions: 45 x 45 mm
Built-in depth: 27 mm
DC output: 5V \equiv 4200mA



Optional accessory

CASY303

CASY 3 SPACE DOUBLE 45X45 MM MODULE PLATE

All CP45 series modules are compatible with the CASY303 3 space module plate.



CP45SM

SWITCH MODULE - MOMENTARY CONTACT

Connection made by using screw terminals
Compatible with CASY303 and standard 45 x 45 mm frames
Dimensions: 45 x 45 mm
Built-in depth: 25 mm



CP45SM2

SWITCH MODULE - 2 GANG MOMENTARY CONTACT

Connection made by using screw terminals
Compatible with CASY303 and standard 45 x 45 mm frames
Dimensions: 45 x 45 mm
Built-in depth: 25 mm



CP45SP

SWITCH MODULE - PERMANENT DOUBLE POLE SWITCH CONTACT

Connection made by using screw terminals
Compatible with CASY303 and standard 45 x 45 mm frames
Dimensions: 45 x 45 mm
Built-in depth: 25 mm



CP45SP2

SWITCH MODULE - 2 GANG PERMANENT DOUBLE POLE SWITCH CONTACT

Connection made by using screw terminals
Compatible with CASY303 and standard 45 x 45 mm frames
Dimensions: 45 x 45 mm
Built-in depth: 25 mm





STANDS

CAYMON's generation microphone stands includes lightweight, professionally styled stands that offer the fit and feeling of tripods costing considerably more. They feature the most versatile microphone needs. For instance the three-piece clutch with protective insert & metal clutch barrel for secure and scratch resistant positioning, and the easy-locking legs that tighten with a single motion of the metal leg attachment "cup" for fast setup and tear down.

CST201



FLOOR STAND

Straight microphone stand. Black cast iron round base. Including cable fixation clamp and 5/8" to 3/8" thread reduction.

Specifications

HEIGHT ADJUSTABLE	BASE DIAMETER	SCREW BASE	WEIGHT
83 cm to 154 cm	25 cm	5/8" & 3/8"	3,2 kg

CST210

FLOOR STAND

Microphone boom stand. Same as CST201B but with standard boom arm of 80 cm. Black cast iron round base. Including cable fixation clamp and 5/8" to 3/8" thread reduction.

Specifications

HEIGHT ADJUSTABLE	BASE DIAMETER	SCREW BASE	WEIGHT
83 cm to 154 cm	25 cm	5/8" & 3/8"	3,78 kg



CST320

FLOOR STAND

A straight microphone stand which is height adjustable between 100 and 176 cm using a plastic clutch style system. A steel boom arm of 800 mm is included with the stand. The base of the stand is made out of 3 foldable steel legs of 330 mm length ensuring stability. Also included with the stand are a 5/8" to 3/8" thread reduction and a cable fixation clip.

Specifications

HEIGHT ADJUSTABLE	BASE DIAMETER	SCREW BASE	WEIGHT
100 cm to 176 cm	72 cm	5/8" & 3/8"	3,20 kg



CAYMON's next generation of professional drum and table microphone stands include lightweight and durable designs that have easy-locking legs or cast iron solid round bases to ensure a fast and stable setup. The drum microphone stand is equipped with an extendible boom arm for easy bass drum miking.

CST259

FLOOR STAND

Microphone drum stand with extendible boom arm, adjustable from 50 to 90 cm. Black cast iron base with foldable legs. Including cable fixation clamp and 5/8" to 3/8" thread reduction.

Specifications

HEIGHT ADJUSTABLE	BASE DIAMETER	SCREW BASE	WEIGHT
48 cm to 73 cm	56 cm	5/8" & 3/8"	1,74 kg



CST101

TABLE STAND

Straight microphone table stand. Black lacquered cast iron round base. Including cable fixation clamp and 5/8" to 3/8" thread reduction.

Specifications

HEIGHT (FIXED)	BASE DIAMETER	SCREW BASE	WEIGHT
17,3 cm	13 cm	5/8" & 3/8"	0,8 kg



CMC020

MICROPHONE CLAMP

Universal microphone clamp
Screw thread : 5/8" and 3/8"
Elastic rubber material.
For small condenser microphones
Diameter : +/- 20 mm
Weight : 0,04 kg



CMA350

SHOCK MOUNT

Shock mount for XLR based gooseneck microphones.

Height : 60 mm
 Inside diameter : 22 mm
 Outside diameter : 75 mm
 Cut-out diameter : 55 mm
 Built-in depth : 60 mm
 Weight : 0,06 kg



CRD130

REDUCTION

Thread adaptor
 5/8" 27 gauge male thread
 3/8" female thread



CST420

MONITOR STAND

Triangular base
 Height adjustable : 92 to 134 cm
 Base dimensions (W x H) : 45 x 39 cm
 Weight : 4,32 kg
 Including spikes



CST250

HEAD BASE

Head base for speaker stand.
 Tube inside diameter : 35 mm
 Top screw : M10
 Height : 11 cm
 Weight : 0,50 kg



Discover CAYMON's range of professional speaker stands. All of the following models are made of aluminium or steel and guarantee a safe and easy setup of your speaker systems. They all have a lightweight design which permits easier transportation. Their solid construction enables them to last even longer and deliver you many years of pleasure.

CST450

SPEAKER STAND

Black aluminium-steel speaker stand with air suspension. Suitable for all speakers with 35 mm stand adaptor.

Tube diameter : 35 mm
Height adjustable: 110 to 180 cm
Max base diameter : 152 cm
Weight : 3,38 kg
Max Load : 35 kg



CST436

SPEAKER STAND

Standard aluminium speaker stand with blocking mechanism. Suitable for all speakers with 35 mm stand adaptor.

Tube diameter : 35 mm
Height adjustable : 114 cm to 200 cm
Max base diameter : 134 cm
Weight : 3,14 kg
Max Load : 35 kg



CST410

SPEAKER POLE

Black aluminium speaker distance pole for satellite systems. For use with 35 mm stand adapter top and bottom.

Tube diameter : 35 mm top and bottom.
Height adjustable: 81 cm to 134 cm
Weight : 1,38 kg
Max load : 35 kg





CHANNEL 6

ALL ZONE 1 ZONE 2 ZONE 3 ZONE 4 ZONE 5

AUDAC

POWER ON OFF

BASS TREBLE MASTER

PROTECT +3 0 -4 -10 -20 ON

CHIME

ALL ZONE 1 ZONE 2 ZONE 3 ZONE 4 ZONE 5

AUDAC

POWER ON OFF

BASS TREBLE MASTER

PROTECT +3 0 -4 -10 -20 ON

CHIME

ALL ZONE 1 ZONE 2 ZONE 3 ZONE 4 ZONE 5

AUDAC

POWER ON OFF



ACCESSORIES

CAYMON's fly systems simplify rigging and hanging installations and ensure a quick and safe construction thanks to its constant strength and durability tests.

FLY060S

EYE BOLT

Eye bolt for speaker cabinets
with M6 flying points.
Thread length : 30 mm
Max load : 70 kg
Sold per 4 pcs



FLY080S

EYE BOLT

Eye bolt for speaker cabinets
with M8 flying points.
Thread length : 35 mm
Max load : 140 kg
Sold per 4 pcs



FLY100S

EYE BOLT

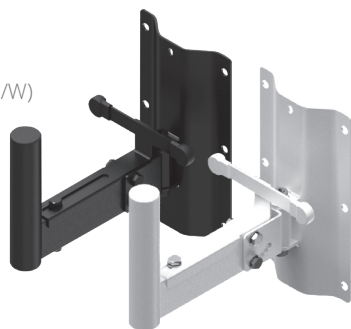
Eye bolt for speaker cabinets
with M10 flying points.
Thread length: 35 mm
Max load : 230 kg
Sold per 4 pcs



WLB25

SPEAKER WALL MOUNT BRACKET

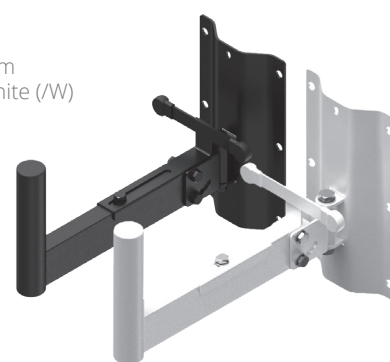
Height : 250 mm
Width: 140 mm
Depth : 267,5 mm
Tube diameter : 35 mm
Color : Black (/B) or white (/W)
Weight : 1,96 kg
Max load : 40 kg



WLB35

SPEAKER WALL MOUNT BRACKET

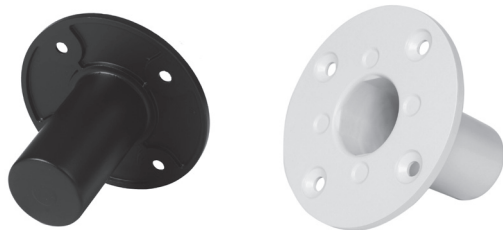
Height : 250 mm
Width : 140 mm
Depth : 367,5 mm
Tube diameter : 35 mm
Color : Black (/B) or white (/W)
Weight : 2,12 kg
Max load : 40 kg



CHB196

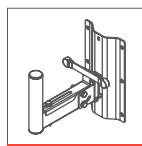
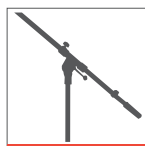
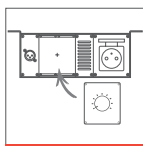
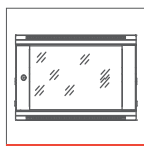
BUILT-IN HEAD BASE FOR SPEAKER

Aluminium flange adaptor.
35 mm to be built in speakers, for use with
speakerstands with 35 mm tube diameter.
Height : 81 mm
Diameter : 110 mm
Built-in depth : 75 mm
Weight : 0,15 kg
Color : Black (/B) or white (/W)



INDEX

ALRXX	18	CASY126	40	GPR412	8	SPRxxGL	7
BCO101	23	CASY131	40	GPR418	8	SPRXXLR	18
BCO242	18	CASY132	40	GPR424	8	SPRXXPT	19
BDP06	21	CASY135	40	HPR506	14	SPRXXRF	19
BDR03	21	CASY136	40	HPR509	14	SS1XXX	19
BLB01	21	CASY138	40	HPR512	14	TPR306A	12
BP106	21	CASY141	40	ID110	21	TPR309A	12
BP106T	21	CASY142	40	IS110	27	WB20/FG	38
BP108	21	CASY143	40	IS210	27	WB20/FS	38
BP108T	21	CASY148	40	IS310	27	WLB25	55
BP112	21	CASY151	40	ISN110	20	WLB35	55
BP112T	21	CASY152	40	KB600	23	WPR10CL	13
BSB01	22	CASY153	40	KM500	23	WPR10CL	19
BSB02	22	CASY161	40	KM600	23	WPR10RF	20
BSD02	22	CASY162	40	KM600A	23	WPR406R	13
BSF01	22	CASY163	40	KS500	23	WPR409R	13
BSF01A	22	CASY167	40	KS600	23	WPR412R	13
BSF02A	22	CASY168	40	NPR404	17	WPR606R	13
BSF02	22	CASY181	40	NPR406	17	WPR609R	13
BSF003	22	CASY182	40	OPR300C	10	WPR612R	13
BSF03	22	CASY191	40	OPR303A	10	WPRXXFS	19
BSF04	22	CASY201	41	OPR306A	10	WPRXXLR	18
BSF005	22	CASY201A	41	OPR309A	10		
BSF05	22	CASY202	41	OPR312A	10		
BSF06	22	CASY203	41	OPR318A	10		
BSFN01	20	CASY203A	41	OPR506A	10		
BSG01H	21	CASY205	41	OPR509A	10		
BSG02H	21	CASY282	41	OPR512A	10		
BSK124	21	CASY285F	41	PR206	16		
BSV01	22	CASY285G	41	PR209	16		
BSV01H	22	CASY285UK	41	PR210WS	16		
BSV02	22	CASY301	41	PR212	16		
BSV02H	22	CASY302	41	PR218	16		
BSV003	22	CASY303	41	PSQ108	26		
BSV03	22	CASY303	43	PSR107UKS	24		
BSV04	22	CASY401	41	PSR109F	24		
BSVN01	20	CASY402	41	PSR109FS	24		
CASY001	32	CHB196	55	PSR109G	24		
CASY002	32	CMA350	50	PSR109GS	24		
CASY003	33	CMC020	49	PSR119ES	24		
CASY014G	35	CP45PF	42	PSR119FS	24		
CASY018G	35	CP45PG	42	PSR119GS	24		
CASY021	32	CP45PUK	42	PSR269FS	24		
CASY024	36	CP45PUSB	42	PSR269GS	24		
CASY028	36	CP45SM	43	PSR429F	25		
CASY030E	35	CP45SM2	43	PSR429G	25		
CASY032	35	CP45SP	43	PSR529F	25		
CASY034	35	CP45SP2	43	PSR529G	25		
CASY038	35	CRD130	50	RD2S	29		
CASY044S	34	CST101	48	RD120L	28		
CASY048S	34	CST201	46	RD220	28		
CASY052	38	CST210	47	RD220L	28		
CASY101	40	CST250	50	RD320	28		
CASY101A	40	CST259	48	RD320L	28		
CASY102	40	CST320	47	RDN110L	20		
CASY103	40	CST410	51	SPR10CSS	19		
CASY103A	40	CST420	50	SPR10DC	18		
CASY104	40	CST436	51	SPR612	6		
CASY105	40	CST450	51	SPR618	6		
CASY105A	40	DPR932	11	SPR627	6		
CASY106	40	DPR942	11	SPR632	6		
CASY107	40	EK100	18	SPR642	6		
CASY108	40	EPR406	15	SPR818(GG)	6		
CASY121	40	EPR409	15	SPR832(GG)	6		
CASY122	40	EPR412	15	SPR842(GG)	6		
CASY123	40	FLY060S	54	SPR1042	6		
CASY124	40	FLY080S	54	SPR8842(GG)	6		
CASY125	40	FLY100S	54	SPRXXFS	19		



caymon.eu
info@caymon.eu