

ARCHITECTURAL SPEAKERS



KEF

OBSESSED WITH HIGH RESOLUTION

Few Hi-Fi loudspeaker manufacturers have had the impact and influence of KEF. Driven by a passionate belief in the power of new technologies, materials and design ingenuity, KEF is a name that commands the deepest respect and reverence.

For over 55 years, KEF's mission has been to fill rooms with the purest sound possible; to create a sound experience akin to being in the room with the performer. Sound that touches heart and soul.

With iconic ranges such as Reference, Blade and the mighty Muon, it is little wonder KEF is in a class apart for technical excellence, creativity and craftsmanship. Moreover, KEF approaches the development of its architectural loudspeakers with the same diligence as any other model; its passion for acoustic excellence would not allow anything else.



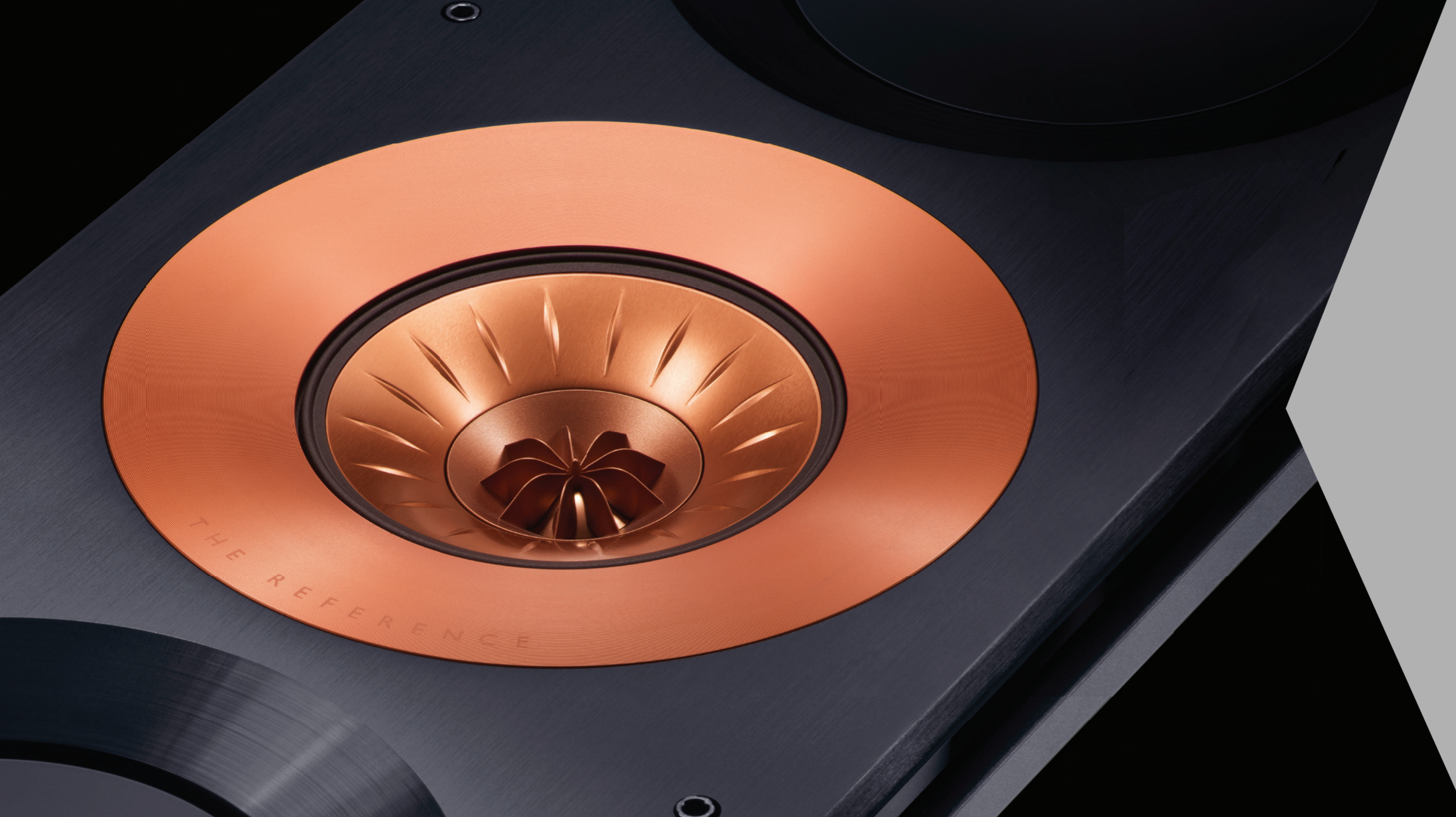
HIDE YOUR SPEAKERS, NOT YOUR SOUND

An integrated home audio system should deliver flawlessly accurate three-dimensional sound. Whether you listen to music or movies, everything should be startlingly clear and breathtakingly realistic. The combination of innovative engineering and sophisticated acoustic design ensures KEF's architectural speakers offer as compelling a performance as its revered stand-alone Hi-Fi speakers.

KEF's obsessive urge to continuously innovate is clearly reflected in a range that includes some of the most advanced architectural speakers and solutions available today. From tiny in-ceiling speakers to the stunning Reference in-wall models, there is a product for every requirement. Each offers the purest sound while impeccable cosmetics ensures the speakers disappear into their surroundings and unique design features allow them to be fitted with the minimum of fuss.

CEDIA[®]
MEMBER

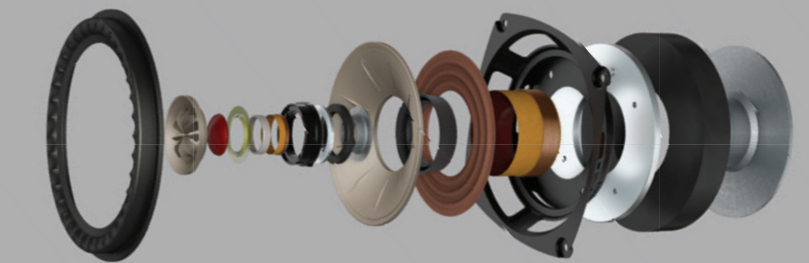




KEF'S UNI-Q TECHNOLOGY

KEF developed the very first Uni-Q driver in 1988 and has been progressively and relentlessly refining the technology ever since. The patented technology places the tweeter in the acoustic centre of the midrange cone, and realises the acoustic ideal of a single point source.

Uni-Q sits at the heart of KEF's entire loudspeaker range, delivering its unique abilities to Blade and Reference, and, of course, to the architectural range. Here, because Uni-Q disperses sound widely and evenly over a large area, the speakers deliver effortlessly natural sound with minimal distortion to every person in the room.





Extreme Home Theatre

KEF's Extreme Home Theatre system sets a new standard for architectural loudspeakers. Designed and built to THX® Certified Ultra and THX® Certified Select standards, the formidable KEF Ci-Reference and Ci-R Series have the jaw-dropping acoustic capabilities of KEF's award-winning Hi-Fi speakers, delivering all the drama and emotional intensity of true theatre sound quality.

Extremely low profile

KEF's incredible Ci-T Series is designed for delivering the highest quality sound when mounting depth is at an absolute premium. Even with a mounting depth of only 36mm, The Ci-T Series speakers still deliver exceptional KEF sound quality.



Ultra-thin bezel

KEF's architectural range offers the slimmest visible rim around the speaker while casting virtually no shadow. Coupled with a magnetic grille and designed to fit tight into the wall or ceiling, KEF speakers disappear as if part of the ceiling.



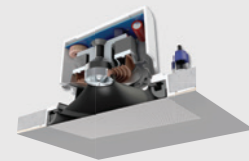
Weatherproof

On the patio, by the pool, or on a yacht, the KEF Ventura Series outdoor speakers let customers enjoy music without compromise. Engineered to IP65 standards, these rugged, hard-wearing speakers can withstand even the most extreme weather conditions. The KEF T, Q, C and E Series are IP64 Certified, which means as well as being impregnable by dust, they are also splash proof.



Flush Mount

KEF's Flush Mount range blends premium sound with premium aesthetics. Sitting completely level with the wall or ceiling with no bezel makes these loudspeakers both easy to install and satisfyingly frameless when in place. In fact, the only hint that a KEF speaker is present is the natural, room-filling sound.



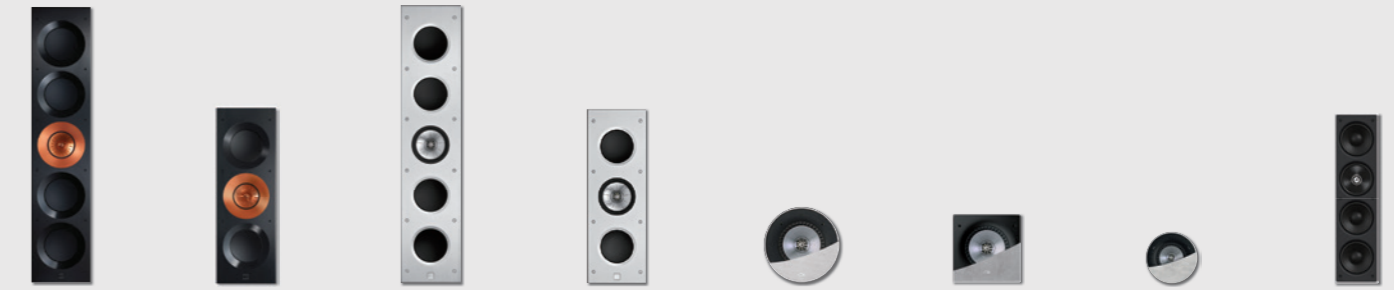
THX and the THX Logo are the property of THX Ltd., registered in the U.S. and other countries.





EXTREME HOME THEATRE

Working closely with the THX Testing Lab in Northern California, KEF's Extreme Home Theatre system sets a new standard for architectural loudspeakers. Certified to THX® Certified Ultra and THX® Certified Select standards, the formidable KEF Ci-Reference and Ci-R Series can deliver all the drama and emotional intensity of true theatre sound quality. Meanwhile the exceptional Q Series delivers the perfect balance of high-resolution sound with depth and clarity.



Product		THX							
Cut-out dimensions	(H x W)	Ci5160REF-THX	Ci3160REF-THX	Ci5160RL-THX	Ci3160RL-THX	Ci200RR-THX	Ci200RS-THX	Ci160RR-THX*	Ci4100QL-THX
	Diameter Ø	1052 x 209 mm (41.42 x 8.23 in.)	660 x 209 mm (25.98 x 8.23 in.)	1052 x 209 mm (41.42 x 8.23 in.)	660 x 209 mm (25.98 x 8.23 in.)	-	240 x 240 mm (9.45 x 9.45 in.)	-	476 x 114 mm (18.74 x 4.49 in.)
Mounting depth from surface		-	-	-	-	238 mm (9.37 in.)	-	196mm (7.71in.)	-
Drive units	LF	99 mm (3.9 in.)	99mm (3.9 in.)	99 mm (3.9 in.)	99 mm (3.9 in.)	126.5 mm (4.98 in.)	127 mm (5 in.)	110mm (4.33 in.)	76mm (3in.)
	MF	4 x 160 mm (6.5 in.)	2 x 160mm (6.5in.)	4 x 160 mm (6.5 in.)	2 x 160 mm (6.5 in.)	200 mm (8 in.) Uni-Q	200 mm (8 in.) Uni-Q	165mm (6.5in.) Uni-Q	3 x 100mm (4in.)
	HF	125 mm (5.25 in.) Uni-Q	125mm (5.25in.) Uni-Q	160 mm (6.5 in.) Uni-Q	160 mm (6.5 in.) Uni-Q	-	-	-	100mm (4in.) Uni-Q
Sensitivity (2.83V/1m)		25 mm (1 in.)	25mm (1in.)	25 mm (1 in.)	25 mm (1 in.)	38 mm (1.5 in.)	38 mm (1.5 in.)	25mm (1in.)	19mm (0.75in.)
Recommended amplifier power		90dB	90	90dB	90dB	90dB	90dB	90	89dB
Nominal impedance		40 - 500 W	40 - 350W	40 - 250 W	30 - 180 W	10 - 190 W	10 - 190 W	10-190W	10-150W
Rough-in Frame		4Ω	4Ω	4Ω	4Ω	4Ω	4Ω	4Ω	4Ω
Rear Enclosure		RIF5160L	RIF3160	RIF5160L	RIF3160L	RIF200R	RIF200S	RIF160R	RIF4100L
		-	-	-	-	RNC200R	RNC200S	RNC160R	-

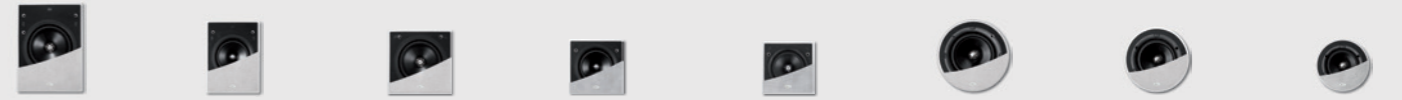
THX and the THX Logo are the property of THX Ltd., registered in the U.S. and other countries.

*To meet THX Ultra distortion specifications, install with 3 litre rear enclosure and set the A/V processor speaker size to small. Not all models and finishes are available in all markets, contact your local dealer for specific range details.



IN-CEILING AND IN-WALL SPEAKERS

KEF's comprehensive collection of in-ceiling and in-wall architectural speakers offers exceptional performance from models designed to disappear into their environment. Whether you require the jaw-dropping acoustic capabilities of R Series, or the space saving features of the dual stereo models, KEF has the perfect speaker for your installation.



Product		Q Series							
Product	(H x W)	Ci200QL	Ci160QL	Ci200QS	Ci160QS	Ci130QS	Ci200QR	Ci160QR	Ci130QR
Cut-out dimensions	(H x W)	334 x 238 mm (13.15 x 9.37 in.)	274 x 194 mm (10.79 x 7.64 in.)	238 x 238 mm (9.37 x 9.37 in.)	194 x 194 mm (7.64 x 7.64 in.)	158 x 158 mm (6.22 x 6.22 in.)	-	-	-
	Diameter Ø	-	-	-	-	-	240 mm (9.45 in.)	196 mm (7.71 in.)	158 mm (6.22 in.)
Mounting depth from surface		99.8mm (3.93in.)	91mm (3.58in.)	99.8mm (3.93in.)	91mm (3.58in.)	77.9mm (3.07in.)	103.3mm (4.07in.)	91mm (3.58in.)	77.8mm (3.06in.)
Drive units	LF	200 mm (8 in.) Uni-Q	160 mm (6.5 in.) Uni-Q	200 mm (8 in.) Uni-Q	160 mm (6.5 in.) Uni-Q	130 mm (5.25 in.) Uni-Q	200 mm (8.0 in.) Uni-Q	160 mm (6.5 in.) Uni-Q	130 mm (5.25 in.) Uni-Q
	MF	-	-	-	-	-	-	-	-
	HF	25 mm (1 in.)	19 mm (0.75 in.)	25 mm (1 in.)	25 mm (1 in.)	25 mm (1 in.)	25 mm (1 in.)	19 mm (0.75 in.)	19 mm (0.75 in.)
Sensitivity (2.83V/1m)		90dB	89dB	90dB	89dB	87dB	90dB	89dB	87dB
Recommended amplifier power		10 - 150 W	10 - 125 W	10 - 150 W	10 - 125 W	10 - 100 W	10 - 150 W	10 - 125 W	10 - 100 W
Nominal impedance		8Ω	8Ω	8Ω	8Ω	8Ω	8Ω	8Ω	8Ω
Rough-in Frame		RIF200L	RIF160L	RIF200S	RIF160S	RIF130S	RIF200R	RIF160R	RIF130R
Rear Enclosure		RNC200L	RNC160L	RNC200S	RNC160S	RNC130S	RNC200R	RNC160R	RNC130R



Product		C Series						E Series		
Product	(H x W)	Ci160.2CL	Ci160.2CS	Ci130.2CS	Ci200.2CR	Ci160.2CR	Ci130.2CR	Ci200ER	Ci160ER	Ci130ER
Cut-out dimensions	(H x W)	274 x 194 mm (10.79 x 7.64 in.)	194 x 194 mm (7.64 x 7.64 in.)	158 x 158 mm (6.22 x 6.22 in.)	-	-	-	-	-	-
	Diameter Ø	-	-	-	240 mm (9.45 in.)	196 mm (7.71 in.)	158 mm (6.22 in.)	240 mm (9.45 in.)	196 mm (7.71 in.)	158 mm (6.22 in.)
Mounting depth from surface		84.5mm (3.33in.)	84.5mm (3.33in.)	77.1mm (3.03in.)	97.2mm (3.83in.)	85.2mm (3.35in.)	77.5mm (3.05in.)	97.2mm (3.83in.)	85.2mm (3.35in.)	77.5mm (3.05in.)
Drive units	LF	160 mm (6.5 in.) Uni-Q	160 mm (6.5 in.) Uni-Q	130 mm (5.25 in.) Uni-Q	200 mm (8 in.) Uni-Q	160 mm (6.5 in.) Uni-Q	130 mm (5.25 in.) Uni-Q	200 mm (8 in.) Uni-Q	160 mm (6.5 in.) Uni-Q	130 mm (5.25 in.) Uni-Q
	MF	-	-	-	-	-	-	-	-	-
	HF	16 mm (0.6 in.)	16 mm (0.6 in.)	16 mm (0.6 in.)	16 mm (0.6 in.)	16 mm (0.6 in.)	16 mm (0.6 in.)	16 mm (0.6 in.)	16 mm (0.6 in.)	16 mm (0.6 in.)
Sensitivity (2.83V/1m)		89dB	89dB	87dB	90dB	89dB	87dB	90dB	89dB	87dB
Recommended amplifier power		10 - 100 W	10 - 100 W	10 - 80 W	10 - 125 W	10 - 100 W	10 - 80 W	10 - 125 W	10 - 100 W	10 - 80 W
Nominal impedance		8Ω	8Ω	8Ω	8Ω	8Ω	8Ω	8Ω	8Ω	8Ω
Rough-in Frame		RIF160L	RIF160S	RIF130S	RIF200R	RIF160R	RIF130R	RIF200R	RIF160R	RIF130R
Rear Enclosure		RNC160L	RNC160S	RNC130S	RNC200R	RNC160R	RNC130R	RNC200R	RNC160R	RNC130R

Not all models and finishes are available in all markets, contact your local dealer for specific range details.

SOUNDLIGHT AND FLUSH MOUNT

Hiding in plain sight, Soundlight speakers mimic LED/halogen lighting fixtures to provide a seamless, unbroken visual. Partnered with a KEF installed passive subwoofers and the KASA500 audio system amplifier, Soundlight speakers fill any space with clear, natural sound.

KEF's Flush Mount models blend premium sound with discreet aesthetics. Sitting completely level with the wall or ceiling with no bezel, the only hint that a speaker is present is the natural, room-filling sound.



Product		Soundlight			Flush Mount	
Cut-out dimensions	(H x W)	Ci100QS	Ci100.2QR	Ci50R	Ci130QSfl	Ci130QRfl
	Diameter Ø	112 x 112 mm (4.41 x 4.41 in.)	-	-	158 x 158 mm (6.22 x 6.22 in.)	-
Mounting depth from surface		-	118.0 mm (4.65 in.)	65 mm (2.56 in.)	-	158 mm (6.22 in.)
		72mm (2.83in.)	103.1mm (4.06in.)	90mm (3.54in.)	101 mm (3.98 in.)	101 mm (3.98 in.)
Drive units	LF	100 mm (4 in.) Uni-Q	75 mm (3.15 in.) Uni-Q	-	130mm (5.25in.) Uni-Q	130mm (5.25in.) Uni-Q
	MF	-	-	50 mm (2.0 in.)	-	-
	HF	19 mm (0.75 in.)	-	-	19mm (0.75in.)	19mm (0.75in.)
Sensitivity (2.83V/1m)		88dB	83dB	82dB	87dB	87dB
Recommended amplifier power		10 - 50 W	10 - 50 W	10 - 30 W	10 - 100W	10 - 100W
Nominal impedance		4Ω	4Ω	6Ω	8Ω	8Ω
Rough-in Frame		RIF100S	RIF100R	-	NA	NA
Rear Enclosure		RNC100S	RNC100R	Ci50CAN	NA	NA

Not all models and finishes are available in all markets, contact your local dealer for specific range details.



Ci-T AND T SERIES

KEF's extremely low-profile Ci-T and T Series deliver a depth of sound completely at odds to their physical depth.

The architectural Ci-T Series' mounting depth of 36mm (59mm for Ci200TRb subwoofer) delivers high-quality sound when space is at a premium, and with the same installation features as the rest of the architectural range.

Utilising the same drivers as the Ci-T series, the T Series is ideal for flanking wall-mounted televisions, or as wall/stand-mounted surround speakers in a home theatre.





SPECIAL APPLICATION

KEF is well ahead of the game when it comes to solving installation problems.

Dual Stereo features a dual voice coil woofer and two tweeters to deliver stereo sound from the space of a single speaker. Alternatively, CiTR-SM is a stereo-to-mono transformer that allows any single KEF speaker to deliver full stereo with all the benefits of Uni-Q.

KEF's Motorised Series' integrated system brings the speaker out from its discreet resting place, and after use, draws it back its original position.

The Commercial Series offers both low impedance and 70/100V operation, among other features ideal for distributed audio applications where music and speech requires the absolute best performance.



Product		Dual Stereo		Motorised	Commercial Round		
	(H x W)	Ci160CSds	Ci160CRds	Ci3-80QT	Ci115QCT	Ci110FCT	Ci160ST
Cut-out dimensions		194 x 194 mm (7.64 x 7.64 in.)	-	112 x 354 mm (4.41 x 13.94 in.)	-	-	-
	Diameter Ø	-	196 mm (7.71 in.)	-	220mm (8.66in.)	220mm (8.66in.)	275mm (10.83in.)
Mounting depth from surface		84.5mm (3.33in.)	86mm (3.36in.)	-	157mm (6.18in.)	107mm (4.21in.)	185mm (7.28in.)
Drive units	LF	160 mm (6.5 in.) Dual voice coil	160 mm (6.5 in.) Dual voice coil	2 x 75mm (3.0in.)	115mm (4.5in.) Uni-Q	110mm (4.3in.)	160mm (6.5in.)
	MF	-	-	75mm (3.0in.) Uni-Q	-	-	-
	HF	2 x 19 mm (0.75 in.)	2 x 19 mm (0.75 in.)	15mm (0.6in.)	19mm (0.75in.)	-	-
Sensitivity (2.83V/1m)		91dB	91dB	87dB	86dB	89dB	85dB
Recommended amplifier power		10 - 80 W	10 - 80 W	10 - 100W	15-80W	10-100W	20-100W
Nominal impedance		8Ω	8Ω	8Ω	8Ω	8Ω	4Ω
Rough-in Frame		RIF160S	RIF160R	-	RIF160R	RIF160R	RIF200R
Rear Enclosure		RNC160S	RNC160R	-	-	-	-

Not all models and finishes are available in all markets, contact your local dealer for specific range details.



INSTALLED SUBWOOFERS

KEF's installed subwoofers offer incredible sonic performance whilst remaining visually discreet, and they are available to partner all of KEF's architectural speaker ranges. Plus, when powered by KEF's DSP-driven KASA500 install audio system amplifier, both the Ci3160RLb-THX and Ci200Qsb-THX subwoofers achieve the intense bass performance levels required for THX® Certified Select and THX® Certified Ultra certification (dependant on configuration).



Product		Subwoofer	Ci3160RLb-THX	Ci200Qsb-THX Passive Mode (Crossover "ON")	Ci200Qsb-THX Active Mode (KASA500)	Ci200TRb Passive Mode	Ci200TRb Active Mode (KASA500)
Cut-out dimensions	(H x W)		660 x 209 mm (25.98 x 8.23 in.)	238 x 238 mm (9.37 x 9.37 in.)	238 x 238 mm (9.37 x 9.37 in.)	-	-
	Diameter Ø		-	-	-	240 mm (9.45 in.)	240 mm (9.45 in.)
Mounting depth from surface			88.5mm (3.84 in.)	101.6mm (4 in.)	101.6mm (4 in.)	59mm (2.32 in.)	59mm (2.32 in.)
Drive units	LF		3 x 160 mm (6.5 in.)	200 mm (8 in.)	200 mm (8 in.)	200 mm (8 in.)	200 mm (8 in.)
Sensitivity (2.83V/1m)			92dB	85dB	-	87dB	87dB
Required amplifier			KEF KASA500	-	KEF KASA500	-	KEF KASA500
Units required for THX Ultra:	Subwoofer KASA500		4 2	-	8 2	-	-
Units required for THX Select:	Subwoofer KASA500		2 1	-	4 1	-	-
Recommended amplifier power			-	10 - 150 W	-	10 - 125 W	-
Nominal impedance			4Ω	6Ω	-	Stereo mode: 2 x 8Ω mono mode: 16Ω	Stereo mode: 2 x 8Ω mono mode: 16Ω
Rough-in Frame			RIF3160L	RIF200S	RIF200S	RIF200R	RIF200R
Rear Enclosure			-	RNC200S	RNC200S	RNC200R	RNC200R

THX and the THX Logo are the property of THX Ltd., registered in the U.S. and other countries.

Not all models and finishes are available in all markets, contact your local dealer for specific range details.

OUTDOOR SERIES

Weather-resistant, IP65 certified and salt spray tested, KEF's marine-quality Ventura Series outdoor models can flood your pool, garden or yacht with high-quality sound, even in extreme atmospheric conditions.

With an all-metal combination of brass, aluminium and stainless steel, the Ventura Series offers exceptional performance throughout the seasons. And delivers the same high-quality sound that KEF has a reputation for, with exceptional clarity and space-filling bass.



Product		Ventura	Ventura 6	Ventura 5 / 5T	Ventura 4
Drive units	LF		160 mm (6.5 in.)	130 mm (5.25 in.)	115 mm (4.5 in.)
	MF		-	-	-
	HF		25 mm (1 in.)	25 mm (1 in.)	19 mm (0.75 in.)
Sensitivity (2.83V/1m)			90dB	89dB	88dB
Recommended amplifier power			10 - 125 W	10 - 100 W	10 - 80 W
Nominal impedance			6Ω	6Ω	6Ω
Operating temperature range			-40°C to 70°C (-40°F to 158°F)	-40°C to 70°C (-40°F to 158°F)	-40°C to 70°C (-40°F to 158°F)
Certification			IP65	IP65	IP65

Not all models and finishes are available in all markets, contact your local dealer for specific range details.





DEDICATED AMPLIFIERS AND ACCESSORIES

Unlock the full potential of KEF subwoofers with the KASA500, a powerful Class-D Dual 250WPC amplifier. This DSP controlled system amplifier is optimised to deliver thunderous bass from KEF architectural subwoofers. With both line and speaker level inputs, and DSP configurable pass-through with optional high-pass filters, the KASA500 is extremely versatile and can be deployed in limitless system configurations.

KEF's BTS30 Bluetooth Keypad and compact amplifier system can deliver Hi-Fi quality sound to a pair of architectural loudspeakers in the same, or a different room.

KEF's accessories allow Architectural speakers to perform at their best. R Rough-In Frames reserve the perfect space for the speakers during a new build, while carefully calculated Steel Rear Enclosures reduce sound leakage into adjacent rooms.



Steel Rough-in Frames



Steel Rear Enclosures

	KASA 500	BTS30
Product	KASA 500	BTS30
Inputs	Selectable stereo RCA line level, or mono LFE RCA level; Stereo speaker level	Bluetooth 4.2 with Qualcomm® aptX™ codec Line-in Coaxial Optical
Outputs	2 x 250watts 4ohms Bridge 1 x 500watts 8ohms	Stereo Mode 2 x 15W@8 Ohms Mono Mode 30W@4 Ohms Line-Out
Product dimension (H X W X D)	88 x 432 x 304mm (3½ x 17 x 12 in.) With feet : 92 x 432 x 304mm (3¾ x 17 x 12 in.) With rack ears; 2 EIA rack space: 88 x 483 x 304mm (3½ x 19 x 12 in.)	Amplifier Unit: 45 x 143 x 125mm (1.77 x 5.63 x 4.92 in) Keypad Unit: 45 x 45 x 40mm (1.58 x 1.77 x 1.57 in) Metal Frame: 1 x 71 x 71mm (0.04 x 2.80 x 2.80 in)
Weight	4kg (9 lbs)	Amplifier Unit: 530g (1.168 lbs) Keypad Unit: 40g (0.088 lbs) Metal Frame: 28g (0.061 lbs)



Not all models and finishes are available in all markets, contact your local dealer for specific range details.



FREEDOM OF EXPRESSION

A major part of KEF's design process ensures that every loudspeaker benefits from the Consistent Voicing concept – a thread of sonic DNA that starts with Muon and travels all the way through to Soundlight. This can only be achieved through outstanding engineering capabilities, unwavering dedication to the KEF philosophy of sound and uncompromising scrutiny.

Consistent Voicing guarantees that every room and any combination of KEF's Architectural and traditional loudspeakers delivers awe-inspiring natural sound. It gives the freedom to create a bespoke solution as unique as the individual with no compromise.

Extremte theatre	Tall Rectangle	Tall Rectangle	Tall Rectangle	Tall Rectangle	Square	Round	Round	Tall Rectangle
Model	C15160REF-THX	C13160REF-THX	C15160RL-THX	C13160RL-THX	C1200RS-THX	C1200RR-THX	C1160RR-THX*	C14100QL-THX
Series	REFERENCE	REFERENCE	R Series	R Series	R Series	R Series	R Series	Q Series
Nominal impedance	4Ω	4Ω	4Ω	4Ω	4Ω	4Ω	4Ω	4Ω
Sensitivity (2.83V/1m)	90dB	90dB	90dB	90dB	90dB	90dB	90dB	89dB
Frequency response (±6dB) open-backed	40Hz-28kHz	40Hz-28kHz	40Hz-28kHz	45Hz-28kHz	33Hz-28kHz	33Hz-28kHz	52Hz - 24kHz	55Hz-28kHz
Frequency range (-10dB)	35Hz-45kHz	32Hz-30kHz	35Hz-45kHz	35Hz-45kHz	28Hz-35kHz	28Hz-45kHz	38Hz-30kHz	40Hz-30kHz
Nominal coverage (degrees)	150°	115°	150°	150°	120°	120°	130°	150°
Max SPL (dB)	116dB	110dB	111dB	106dB	106dB	106dB	105dB	104dB
Crossover frequency	400Hz, 2.8kHz	350Hz, 2.7kHz	300Hz, 2.4kHz	340Hz, 2.5kHz	2.2kHz	2.2kHz	2.1kHz	2.2kHz
Drive units	LF 4 x 160mm (6.5in.)	2 x 160mm (6.5in.)	4 x 160mm (6.5in.)	2 x 160mm (6.5in.)	200mm (8in.) Uni-Q	200mm (8in.) Uni-Q	165mm (6.5in.) Uni-Q	3 x 100mm (4in.)
	MF 125mm (5.25in.) Uni-Q	125mm (5.25in.) Uni-Q	160mm (6.5in.) Uni-Q	160mm (6.5in.) Uni-Q	-	-	-	100mm (4in.) Uni-Q
	HF 25mm (1in.)	25mm (1in.)	25mm (1in.)	25mm (1in.)	38mm (1.5in.)	38mm (1.5in.)	25mm (1in.)	19mm (0.75in.)
Recommended amplifier power	40-500W	40-350W	40-250W	30-180W	10-190W	10-190W	10-190W	10-150W
Recommended high-pass filter (Hz)	35Hz-80Hz*	40Hz	40Hz-80Hz*	40-80Hz*	35Hz - 80Hz	35Hz - 80Hz*	38Hz	55Hz
Product external dimensions	(H x W x D) 1070 x 230 x 105.7 mm (42.13 x 9.06 x 4.16 in.)	680 x 230 x 105.7 mm (26.77 x 9.06 x 4.16 in.)	1070 x 230 x 105.7 mm (42.13 x 9.06 x 4.16 in.)	680 x 230 x 105.7 mm (26.77 x 9.06 x 4.16 in.)	273 x 273 x 132.6 mm (10.75 x 10.75 x 5.22 in.)	-	-	490 x 128 x 81mm (19.29 x 5.04 x 3.19 in.)
	Diameter Ø	-	-	-	-	290mm (11.42in.)	234.6mm (9.24in.)	-
	Depth	-	-	-	-	132.6mm (5.22in.)	115mm (4.53in.)	-
Cut-out dimensions	(H x W) 1052 x 209 mm (41.42 x 8.23 in.)	660 x 209 mm (25.98 x 8.23 in.)	1052 x 209 mm (41.42 x 8.23 in.)	660 x 209 mm (25.98 x 8.23 in.)	240 x 240 mm (9.45 x 9.45 in.)	-	-	476 x 114 mm (18.74 x 4.49 in.)
	Diameter Ø	-	-	-	-	238mm (9.37in.)	196mm (7.71in.)	-
Net Weight	22kg (48.5lbs)	13.4kg (29.54lbs)	19kg (41.89lbs)	11.7kg (25.79lbs)	3.6kg (7.94lbs)	3.6kg (7.94lbs)	2.94kg (6.48lbs)	3kg (6.61lbs)
Mounting depth from surface	99mm (3.9in.)	99mm (3.9in.)	99mm (3.9in.)	99mm (3.9in.)	127mm (5in.)	126.5mm (4.98in.)	110mm (4.33in.)	76mm (3in.)
Optional rough in frame	RIF5160L	RIF3160L	RIF5160L	RIF3160L	RIF200S	RIF200R	RIF160R	RIF4100L
Ideal Rear Volume (L)	90L	60L	90L	60L	20L	20L	20L	15L
Minimum Rear Volume (L)	40L	30L	40L	30L	10L	10L	10L	7L
Certification	THX ULTRA2	THX ULTRA	THX ULTRA2	THX ULTRA2	THX ULTRA 2, IP64	THX ULTRA2, IP64	THX ULTRA, IP64	THX SELECT2, IP64

*Recommended high-pass filter for THX spec: 80Hz. †To meet THX Ultra distortion specifications, install with 3 litre rear enclosure and set the A/V processor speaker size to small.

Special Application	Square	Round	Square	Round
Model	C1160TS	C1160TR	C1160CSds	C1160CRds
Series	T Series	T Series	C Series / Dual Stereo	C Series / Dual Stereo
Nominal impedance	8Ω	8Ω	8Ω	8Ω
Sensitivity (2.83V/1m)	87dB	87dB	91dB	91dB
Frequency response (±6dB) open-backed	110Hz-24kHz	110Hz-24kHz	50Hz-20kHz	50Hz-20kHz
Frequency range (-10dB)	69Hz-45kHz	69Hz-45kHz	45-30kHz	45Hz-30kHz
Nominal coverage (degrees)	160°	160°	120°	120°
Max SPL (dB)	101dB	101dB	106dB	106dB
Crossover frequency	1.7kHz	1.7kHz	3.2kHz	3.2kHz
Drive units	LF 115mm (4.5in.) Dual layer	115mm (4.5in.) dual layer	Dual voice coil: 160mm (6.5in.)	Dual voice coil: 160mm (6.5in.)
	MF -	-	-	-
	HF 25mm (1in.)	25mm (1in.)	2 x 19mm (0.75in.)	2 x 19mm (0.75in.)
Recommended amplifier power	10-100W	10-100W	10-80W	10 - 80W
Recommended high-pass filter (Hz)	70Hz	70Hz	50Hz	50Hz
Product external dimensions	(H x W x D) 222.8 x 222.8 x 41mm (8.77 x 8.77 x 1.61 in.)	-	223 x 223 x 90.5 mm (8.78 x 8.78 x 3.56 in.)	-
	Diameter Ø	-	234.6mm (9.24in.)	-
	Depth	-	40mm (1.57in.)	-
Cut-out dimensions	(H x W) 194 x 194 mm (7.64 x 7.64 in.)	-	194 x 194 mm (7.64 x 7.64 in.)	-
	Diameter Ø	-	196mm (7.71in.)	-
Net Weight	1.05kg (2.31lbs)	1kg (2.2lbs)	1.80kg (4.0lbs)	1.80kg (4.0lbs)
Mounting depth from surface	<36mm (1.42 in.)	<36mm (1.42in.)	84.5mm (3.33in.)	86mm (3.36in.)
Optional rough in frame	RIF160S	RIF160R	RIF160S	RIF160R
Optional rear enclosure	RNC160S	RNC160R	RNC160S	RNC160R
Ideal Rear Volume (L)	3L	3L	35L	35L
Minimum Rear Volume (L)	1L	1L	20L	20L
Certification	IP64	IP64	IP64	IP64

In-ceiling and in-wall	Rectangle	Rectangle	Square	Square	Square	Round	Round	Round
Model	C1200QL	C1160QL	C1200QS	C1160QS	C1130QS	C1200QR	C1160QR	C1130QR
Series	Q Series	Q Series	Q Series	Q Series	Q Series	Q Series	Q Series	Q Series
Nominal impedance	8Ω	8Ω	8Ω	8Ω	8Ω	8Ω	8Ω	8Ω
Sensitivity (2.83V/1m)	90dB	89dB	90dB	89dB	87dB	90dB	89dB	87dB
Frequency response (±6dB) open-backed	35Hz-34kHz	38Hz-34kHz	35Hz-34kHz	38Hz-34kHz	45Hz-34kHz	35Hz - 34kHz	38Hz-34kHz	45Hz-34kHz
Frequency range (-10dB)*	32Hz-30kHz	32Hz-30kHz	32Hz-30kHz	32Hz-30kHz	38Hz-30kHz	32Hz-30kHz	32Hz-30kHz	38Hz-30kHz
Nominal coverage (degrees)	115°	125°	115°	125°	130°	115°	125°	130°
Max SPL (dB)	107dB	105dB	107dB	105dB	103dB	107dB	105dB	103dB
Crossover frequency	2.5kHz	3.0kHz	2.5kHz	3.0kHz	3.8kHz	2.5kHz	3.0kHz	3.8kHz
Drive units	LF 200mm (8in.) Uni-Q	160mm (6.5in.) Uni-Q	200mm (8in.) Uni-Q	160mm (6.5in.) Uni-Q	130mm (5.25in.) Uni-Q	200mm (8in.) Uni-Q	160mm (6.5in.) Uni-Q	130mm (5.25in.) Uni-Q
	HF 25mm (1in.)	19mm (0.75in.)	25mm (1in.)	19mm (0.75in.)	19mm (0.75in.)	25mm (1in.)	19mm (0.75in.)	19mm (0.75in.)
Recommended amplifier power	10-150W	10-150W	10-150W	10-125W	10-100W	10-150W	10-100W	10-100W
Recommended high-pass filter (Hz)	40Hz	45Hz	40Hz	45Hz	50Hz	40Hz	45Hz	50Hz
Product external dimensions	(H x W x D) 369 x 273 x 106 mm (14.53 x 10.75 x 4.17in.)	303 x 223 x 97.5 mm (11.93 x 8.78 x 3.84 in.)	273 x 273 x 106 mm (10.75 x 10.75 x 4.17 in.)	223 x 223 x 97 mm (8.78 x 8.78 x 3.82 in.)	184 x 184 x 84 mm (7.24 x 7.24 x 3.31 in.)	-	-	-
	Diameter Ø	-	-	-	-	289.6mm (11.4in.)	234.6mm (9.24in.)	193.4mm (7.61in.)
	Depth	-	-	-	-	109.8mm (4.32in.)	98mm (3.86in.)	83.3mm (3.28in.)
Cut-out dimensions	(H x W) 334 x 238 mm (13.15 x 9.37 in.)	274 x 194 mm (10.79 x 7.64 in.)	238 x 238 mm (9.37 x 9.37 in.)	194 x 194 mm (7.64 x 7.64 in.)	158 x 158 mm (6.22 x 6.22 in.)	-	-	-
	Diameter Ø	-	-	-	-	240mm (9.45in.)	196mm (7.71in.)	158mm (6.22in.)
Net Weight	2.6kg (5.73lbs)	2.05kg (4.51lbs)	2.4kg (5.3lbs)	1.88kg (4.14lbs)	1.4kg (3.1lbs)	2.40mm (9.45in.)	1.96mm (7.71in.)	1.58mm (6.22in.)
Mounting depth from surface	99.8mm (3.93in.)	91mm (3.58in.)	99.8mm (3.93in.)	91mm (3.58in.)	77.9mm (3.07in.)	103.3mm (4.07in.)	91mm (3.58in.)	77.8mm (3.06in.)
Optional rough in frame	RIF200L	RIF160L	RIF200S	RIF160S	RIF130S	RIF200R	RIF160R	RIF130R
Optional rear enclosure	RNC200L	RNC160L	RNC200S	RNC160S	RNC130S	RNC200R	RNC160R	RNC130R
Ideal Rear Volume (L)	60	25	60	25	15	60L	25L	15L
Minimum Rear Volume (L)	35	15	35	15	10	35L	15L	10L
Certification	IP64	IP64	IP64	IP64	IP64	IP64	IP64	IP64

Special Application	Motorised	Commercial Round	Commercial Round	Commercial Round
Model	C13-80QT	C115QCT	C1110FCT	C1160ST
Series	Q Series	Q Series	Classic Series	Classic Series
Nominal impedance	8Ω	8Ω	8Ω	8Ω
Sensitivity (2.83V/1m)	87dB	86dB	89dB	85dB
Frequency response (±6dB) open-backed	-	-	-	-
Frequency response (±6dB) with back can / rear enclosure	87Hz-30kHz	70Hz-20kHz	110Hz-18kHz	60Hz-130Hz
Frequency range (-10dB)	94Hz-35kHz	81Hz-30kHz	105Hz-30kHz	65Hz-300Hz
Nominal coverage (degrees)	170°	160°	170°	-
Max SPL (dB)	102dB	95dB	98dB	97dB
Crossover frequency	300Hz, 3kHz	2.3kHz	3kHz	-
Drive units	LF 2 x 75mm (3.0in.)	115mm (4.5in.) Uni-Q	110mm (4.3in.)	160mm (6.5in.)
	MF 75mm (3.0in.) Uni-Q	-	-	-
	HF 15mm (0.6in.)	19mm (0.75in.)	-	-
Recommended amplifier power	10-100W	15-80W	10-100W	20-100W
Recommended high-pass filter (Hz)	100Hz	85Hz	110Hz	-
Recommended low-pass filter (Hz)	-	-	-	100-200Hz
Product external dimensions	(H x W x D) 128 x 377 x 125 mm (5.04 x 14.84 x 4.92 in.)	-	-	-
	Diameter Ø	-	220mm (8.66in.)	275mm (10.83in.)
	Depth	-	160mm (6.30in.)	188mm (7.40in.)
Cut-out dimensions	(H x W) 112 x 354 mm (4.41 x 13.94 in.)	-	-	-
	Diameter Ø	-	196mm (7.71in.)	240mm (9.45in.)
Net Weight	3.3 kg (7.26lbs)	2.7 kg (5.94lbs)	2.25 kg (4.95lbs)	3.4 kg (7.48lbs)
Mounting depth from surface	-	157mm (6.18in.)	107mm (4.21in.)	185mm (7.28in.)
Mounting depth from surface without back can	120mm (4.72in.)	-	-	-
Optional rough in frame	-	RIF160R	RIF160R	RIF200R
Optional rear enclosure	-	-	-	-
Ideal Rear Volume(L)	-	6L	5L	20L
Minimum Rear Volume(L)	-	1.5L	1L	3L
Certification	-	UL2043, UL-1480-5	UL2043, UL-1480-5	UL2043, UL-1480-5

Special Application	Square	Round	Round	Square	Round
Model	C1100QS	C150R	C1100.2QR	C1130QSfl	C1130QRfl
Series	Soundlight/ Q Series	Soundlight/ Q Series	Soundlight/ Q Series	FL Series	FL Series
Nominal impedance	4Ω	6Ω	4Ω	8Ω	8Ω
Sensitivity (2.83V/1m)	88dB	82dB	83dB	87dB	87dB
Frequency response (±6dB) open-backed	80Hz-27kHz	125Hz-20kHz	90Hz-27kHz	45Hz - 34kHz	45Hz - 34kHz
Frequency response (±6dB) with back can / rear enclosure	-	170Hz-20kHz	130Hz-27kHz	-	-
Frequency range (-10dB)	53Hz-25kHz	123Hz-25kHz	70Hz-40kHz	38Hz-30kHz	38Hz-30kHz
Nominal coverage (degrees)	150°	165°	150°	130°	130°
Max SPL (dB)	103dB	94dB	99dB	103dB	103dB
Crossover frequency	3kHz	3.5kHz	3.8kHz	3.8kHz	3.8kHz
Drive units	LF 100mm (4in.) Uni-Q	-	75mm (3.15in.) Uni-Q	130mm (5.25in.) Uni-Q	130mm (5.25in.) Uni-Q
	MF -	50mm (2.0in.)	-	-	-
	HF 19mm (0.75in.)	-	16mm (0.6in.)	19mm (0.75in.)	19mm (0.75in.)
Recommended amplifier power	10-50W	10-30W	10-50W	10-100W	10-100W
Recommended high-pass filter (Hz)	60Hz	130Hz	80Hz	50Hz	50Hz
Product external dimensions	(H x W x D) 127 x 127 x 76 mm (5.0 x 5.0 x 2.99 in.)	-	-	200.5 x 200.5 x 103.6mm (7.9 x 7.9 x 4.08 in.)	-
	Diameter Ø	-	80mm (3.15in.)	135.6mm (5.34in.)	200.6mm (7.9in.)
	Depth	-	94.5mm (3.72in.)	107.5mm (4.23in.)	104.6mm (4.12in.)
Cut-out dimensions	(H x W) 112 x 112 mm (4.41 x 4.41 in.)	-	-	158 x 158 mm (6.22 x 6.22 in.)	-
	Diameter Ø	-	65mm (2.56in.)	118.0mm (4.65in.)	158mm (6.22in.)
Net Weight	0.67kg (1.48lbs)	0.135kg (0.31lbs)	0.50kg (1.10lbs)	1.6kg (3.53lbs)	1.45kg (3.19lbs)
Mounting depth from surface	72mm (2.83in.)	90mm (3.54in.)	103.1mm (4.06in.)	101mm (3.98in.)	101mm (3.98in.)
Mounting depth from surface without back can	-	50mm (1.97in.)	52mm (2in.)	-	-
Optional rough in frame	RIF100S	-	RIF100R	-	-
Optional rear enclosure	RNC100S	C150CAN	RNC100R	-	-

Subwoofer		Tall Rectangle	Square	Square	Round	Round
Model		C13160RLb-THX	C1200Q5b-THX Passive Mode (Crossover ON)	C1200Q5b-THX Active Mode (KASAS00)	C1200TRb Passive Mode	C1200TRb Active Mode (KASAS00)
Series		R Series	Q Series	Q Series	T Series	T Series
Nominal Impedance		4Ω	6Ω	-	-	-
Nominal Impedance stereo mode		-	-	-	2 x 8Ω	2 x 8Ω
Nominal Impedance mono mode		-	-	-	16Ω	16Ω
Sensitivity (2.83V/1m)		92dB	85dB	-	87dB	87dB
Frequency response (±6dB) open-backed		20Hz-140Hz	40Hz-100Hz	30Hz-140Hz	42Hz-120Hz	32Hz-120Hz
Frequency range (-10dB)		25Hz - KASA setting	29Hz-140Hz	25Hz-KASA setting	38Hz-140Hz	25Hz-KASA setting
Max SPL (dB)		112dB	104dB	104dB	109dB	109dB
Crossover frequency		-	100Hz	-	-	-
Drive units	LF	3 x 160mm (6.5in.)	200mm (8 in.)	200mm (8 in.)	200mm (8 in.)	200mm (8 in.)
Required amplifier		KEF KASAS00	-	KEF KASAS00	-	KEF KASAS00
Recommended amplifier power		-	10-150W	-	10-125W	-
Recommended high-pass filter (Hz)		25-80Hz*	-	KASA	-	-
Recommended low-pass filter (Hz)		50Hz-120Hz	80Hz-120Hz	50Hz-120Hz	80Hz-120Hz	60Hz-120Hz
Product external dimensions	(H x W x D)	680 x 230 x 96 mm (26.77 x 9.06 x 3.78 in.)	273 x 273 x 106 mm (10.75 x 10.75 x 4.17 in.)	273 x 273 x 106 mm (10.75 x 10.75 x 4.17 in.)	-	-
	Diameter Ø	-	-	-	290 mm (11.42 in.)	290 mm (11.42 in.)
Cut-out dimensions	(H x W)	660 x 209 mm (25.98 x 8.23 in.)	238 x 238 mm (9.37 x 9.37 in.)	238 x 238 mm (9.37 x 9.37 in.)	-	-
	Diameter Ø	-	-	-	240mm (9.45 in.)	240mm (9.45 in.)
	Depth	-	-	-	63mm (2.48 in.)	63mm (2.48 in.)
Net Weight		10.9 kg (24.1 lbs)	3.3kg (7.28 lbs)	3.3kg (7.28 lbs)	1.7kg (3.75lbs)	1.7kg (3.75lbs)
Mounting depth from surface		88.5mm (3.84 in.)	101.6mm (4 in.)	101.6mm (4 in.)	59mm (2.32 in.)	59mm (2.32 in.)
Optional rough in frame		RIF3160L	RIF200S	RIF200S	RIF200R	RIF200R
Optional rear enclosure		-	-	-	RNC200R	RNC200R
Ideal Rear Volume (L)		80L	32L*	32L*	60L	60L
Minimum Rear Volume (L)		40L	20L	20L	35L	35L
Certification		THX ULTRA2, THX SELECT2	THX ULTRA2, THX SELECT2, IP64	THX ULTRA2, THX SELECT2, IP64	IP64	IP64

* Recommended high-pass filter for THX spec: 80Hz *For single speaker only. Double volume for pair speakers

Outdoor					
Model		Ventura 6	Ventura 5	Ventura 5T	Ventura 4
Series		Ventura	Ventura	Ventura	Ventura
Nominal impedance		6Ω	6Ω	6Ω	6Ω
Sensitivity (2.83V/1m)		90dB	89dB	89dB	88dB
Frequency response (±6dB) open-backed		68Hz-20kHz	74Hz-20kHz	74Hz-20kHz	85Hz-20kHz
Frequency range (-10dB)		54Hz-25kHz	58Hz-25kHz	58Hz-25kHz	65Hz-25kHz
Nominal coverage (degrees)		112°	125°	125°	120°
Max SPL (dB)		105dB	103dB	103dB	101dB
Crossover frequency		3kHz	3.8kHz	3.8kHz	3.5kHz
Drive units	LF	160mm (6.5in.)	130mm (5.25in.)	130mm (5.25in.)	115mm (4.5in.)
	MF	-	-	-	-
	HF	25mm (1in.)	25mm (1in.)	25mm (1in.)	19mm (0.75in.)
Recommended amplifier power		10-125W	10-100W	10-100W	10-80W
Recommended high-pass filter (Hz)		50Hz	60Hz	60Hz	80Hz
Transformer taps		-	-	70V, 3.75V, 7.5V, 15W, 30W 100V, 7.5V, 15W, 30W, 60W	-
Product external dimensions	(H x W x D)	300 x 226 x 219 mm (11.8 x 9 x 8.6 in.)	262 x 197 x 189 mm (10.3 x 7.75 x 7.4 in.)	262 x 197 x 189 mm (10.3 x 7.75 x 7.4 in.)	231 x 172 x 173 mm (9 x 6.75 x 6.8 in.)
	(With bracket and knobs) (H x W x D)	300 x 226 x 263.5 mm (11.8 x 9 x 10.38 in.)	262 x 197 x 235 mm (10.3 x 7.75 x 9.25 in.)	262 x 197 x 235 mm (10.3 x 7.75 x 9.25 in.)	235 x 172 x 203.2 mm (9.25 x 6.75 x 8 in.)
Net Weight		3.8kg (8.4lbs)	2.85kg (6.28lbs)	3.3kg (7.25lbs)	2.4kg (5.3lbs)
Operating temperature range		-40°C to 70°C (-40°F to 158°F)	-40°C to 70°C (-40°F to 158°F)	-40°C to 70°C (-40°F to 158°F)	-40°C to 70°C (-40°F to 158°F)
Certification		IP65	IP65	IP65	IP65

THX and the THX Logo are the property of THX Ltd., registered in the U.S. and other countries. KEF reserves the right, in line with continuing research and development, to amend or change specifications. E&OE

Amplifier	Amplifier	Bluetooth keypad and compact amplifier system
Model	KASA 500	BTS30
Inputs	Selectable stereo RCA line level, or mono LFE RCA level; Stereo speaker level	Bluetooth 4.2 with Qualcomm® aptX™ codec Line-in Coaxial Optical
Outputs	2 x 250watts 4ohms Bridge 1 x 500watts 8ohms	Stereo Mode 2 x 15W@8 Ohms Mono Mode 30W@4 Ohms Line-Out
Crossover Frequency	40 - 140Hz or software bypass	-
Bluetooth Range Bluetooth Capacity	-	10m 8 Devices
Bluetooth Frequency	-	2.4GHz
Bluetooth Power	-	2.5mW For Class 2
Operating Voltage	-	100-240VAC
Frequency Response	-	20Hz-20KHz
EQ Frequency	-	100Hz +6dB, 10KHz-1dB
Signal to Noise	-	90dB
Product Dimension (H X W X D)	88 x 432 x 304mm (3½ x 17 x 12 in.) With feet : 92 x 432 x 304mm (3½ x 17 x 12 in.) With rack ears; 2 EIA rack space: 88 x 483 x 304mm (3½ x 19 x 12 in.)	Amplifier Unit: 45 x 143 x 125mm (1.77 x 5.63 x 4.92 in.) Keypad Unit: 45 x 45 x 40mm (1.58 x 1.77 x 1.57 in.) Metal Frame: 1 x 71 x 71mm (0.04 x 2.80 x 2.80 in.)
Weight	4kg (9lbs)	Amplifier Unit: 530g (1.168lbs) Keypad Unit: 40g (0.088lbs) Metal Frame: 28g (0.061lbs)

